

For Research Use Only

CoraLite®555-conjugated B23/NPM1 Monoclonal antibody



Catalog Number:CL555-60096

Featured Product

1 Publications

Basic Information

Catalog Number: CL555-60096	GenBank Accession Number: BC002398	Purification Method: Protein G purification
Size: 100ul , Concentration: 1000 µg/ml by Nanodrop;	GeneID (NCBI): 4869	CloneNo.: 4F12A3
Source: Mouse	Full Name: nucleophosmin (nucleolar phosphoprotein B23, numatrin)	Recommended Dilutions: IF 1:500-1:2000
Isotype: IgG1	Calculated MW: 33 kDa	Excitation/Emission maxima wavelengths: 557 nm / 570nm
Immunogen Catalog Number: AG7415	Observed MW: 35-38 kDa	

Applications

Tested Applications: FC (Intra), IF	Positive Controls: IF : HepG2 cells,
Cited Applications: IF	
Species Specificity: human, mouse, rat	
Cited Species: human	

Background Information

Nucleophosmin (NPM1,B23) is a putative ribosome assembly factor with a high affinity for peptides containing nuclear localization signals (NLSs). The transport of proteins across the nuclear envelope is a selective, multistep process involving several cytoplasmic factors. Proteins must be recognized as import substrates, dock at the nuclear pore complex and translocate across the nuclear envelope in an ATP-dependent fashion. Several cytosolic and nuclear proteins that are central to this process have been identified. The 38 kDa nuclear protein nucleophosmin is involved in ribosomal assembly and rRNA transport. It is an abundant protein that is highly phosphorylated by Cdc2 kinase during mitosis.

Notable Publications

Author	Pubmed ID	Journal	Application
Tamami Miyagi	37332605	iScience	IF

Storage

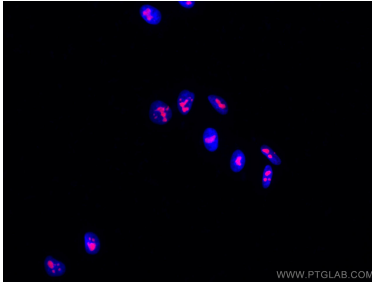
Storage:
Store at -20°C. Avoid exposure to light.
Storage Buffer:
PBS with 50% Glycerol, 0.05% Proclin300, 0.5% BSA, pH 7.3.
Aliquoting is unnecessary for -20°C storage

*** 20ul sizes contain 0.1% BSA

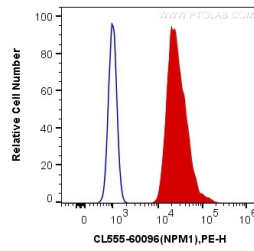
For technical support and original validation data for this product please contact:
T: 1 (888) 4PTGLAB (1-888-478-4522) (toll free in USA), or 1(312) 455-8498 (outside USA)
E: proteintech@ptglab.com
W: ptglab.com

This product is exclusively available under Proteintech Group brand and is not available to purchase from any other manufacturer.

Selected Validation Data



Immunofluorescent analysis of (4% PFA) fixed HepG2 cells using CoraLite®555 B23/NPM1 antibody (CL555-60096, Clone: 4F12A3) at dilution of 1:1000. DAPI (blue).



1X10⁶ HeLa cells were intracellularly stained with 0.25 ug CoraLite®555 Anti-Human B23/NPM1 (CL555-60096, Clone:4F12A3) (red), or 0.25 ug Control Antibody. Cells were fixed and permeabilized with Transcription Factor Staining Buffer Kit (PF00011).