

For Research Use Only

CoraLite®555-conjugated Chromogranin A Monoclonal antibody



Catalog Number:CL555-60135

Basic Information

Catalog Number: CL555-60135	GenBank Accession Number: BC006459	Purification Method: Protein G purification
Size: 100ul , Concentration: 1000 µg/ml by Nanodrop;	GeneID (NCBI): 1113	CloneNo.: 3H11C11
Source: Mouse	Full Name: chromogranin A (parathyroid secretory protein 1)	Recommended Dilutions: IF 1:50-1:500
Isotype: IgG1	Calculated MW: 51 kDa	Excitation/Emission maxima wavelengths: 557 nm / 570 nm
Immunogen Catalog Number: AG0807		

Applications

Tested Applications: FC (Intra), IF	Positive Controls: IF : PC-12 cells, SH-SY5Y cells, Neuro-2a cells
Species Specificity: human, rat, pig, mouse	

Background Information

Chromogranin A is a member of the granin family of neuroendocrine secretory proteins. It is located in secretory vesicles of neurons and endocrine cells. Chromogranin A is the precursor to several functional peptides including vasostatin, pancreastatin, catestatin and parastatin. These peptides negatively modulate the neuroendocrine function of the releasing cell (autocrine) or nearby cells (paracrine). CgA is one of the most used tumor markers in NET's (neuroendocrine tumors), and elevated CgA concentrations have been demonstrated in serum or plasma of patients with different types of these tumors.

Storage

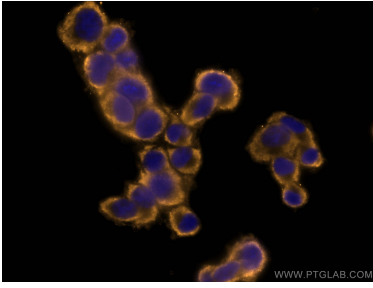
Storage:
Store at -20°C. Avoid exposure to light. Stable for one year after shipment.
Storage Buffer:
PBS with 50% Glycerol, 0.05% Proclin300, 0.5% BSA, pH 7.3.
Aliquoting is unnecessary for -20°C storage

*** 20ul sizes contain 0.1% BSA

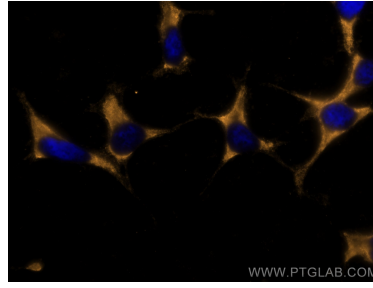
For technical support and original validation data for this product please contact:
T: 1 (888) 4PTGLAB (1-888-478-4522) (toll free in USA), or 1(312) 455-8498 (outside USA)
E: proteintech@ptglab.com
W: ptglab.com

This product is exclusively available under Proteintech Group brand and is not available to purchase from any other manufacturer.

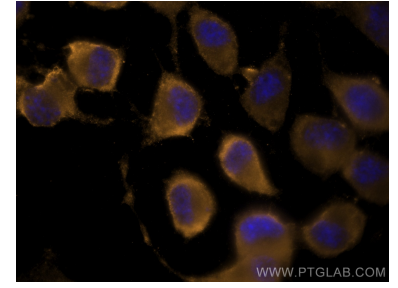
Selected Validation Data



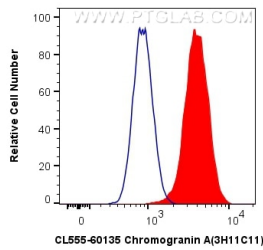
Immunofluorescent analysis of (-20°C Ethanol) fixed PC-12 cells using CoraLite@555 Chromogranin A antibody (CL555-60135, Clone: 3H11C11) at dilution of 1:200.



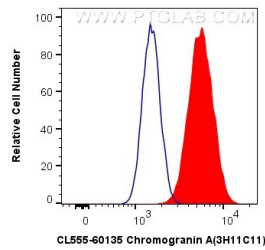
Immunofluorescent analysis of (-20°C Ethanol) fixed SH-SY5Y cells using CoraLite@555 Chromogranin A antibody (CL555-60135, Clone: 3H11C11) at dilution of 1:200.



Immunofluorescent analysis of (4% PFA) fixed Neuro-2a cells using CoraLite@555 Chromogranin A antibody (CL555-60135, Clone: 3H11C11) at dilution of 1:200.



1X10⁶ SH-SY5Y cells were intracellularly stained with 0.8 ug CoraLite@555 Anti-Human Chromogranin A (CL555-60135, Clone:3H11C11) (red), or 0.8 ug Control Antibody. Cells were fixed with 4% PFA and permeabilized with Flow Cytometry Perm Buffer (PF00011-C).



1X10⁶ Neuro-2a cells were intracellularly stained with 0.8 ug CoraLite@555 Anti-Human Chromogranin A (CL555-60135, Clone:3H11C11) (red), or 0.8 ug Control Antibody. Cells were fixed with 4% PFA and permeabilized with Flow Cytometry Perm Buffer (PF00011-C).