

For Research Use Only

CoraLite®555 Anti-Mouse CD107a / LAMP1 (1D4B)



Catalog Number:CL555-65050

Basic Information

Catalog Number: CL555-65050	GenBank Accession Number: BC006785	Purification Method: Affinity purification
Size: 100ug, 0.5 mg/ml	GeneID (NCBI): 16783	CloneNo.: 1D4B
Source: Rat	UNIPROT ID: P11438	Recommended Dilutions: IF/ICC 1:50-1:500
Isotype: IgG2a, kappa	Full Name: lysosomal-associated membrane protein 1	Excitation/Emission maxima wavelengths: 557 nm / 570 nm

Applications

Tested Applications: IF, FC (Intra)	Positive Controls: IF/ICC : NIH/3T3 cells,
Species Specificity: Mouse	

Background Information

LAMP1 (CD107a) is a heavily glycosylated membrane protein enriched in the lysosomal membrane. LAMP1 is extensively glycosylated with asparagine-linked oligosaccharides which protect it from intracellular proteolysis (PMID: 10521503). Although LAMP1 is expressed largely in the endosome-lysosomal membrane of cells, it is also found on the plasma membrane (PMID: 16168398). Elevated LAMP1 expression at the cell surface has also been detected during platelet and granulocytic cell activation, as well as in some tumor cells (PMID: 29085473). LAMP1 functions to provide selectins with carbohydrate ligands. This protein has also been shown to be a marker of degranulation on lymphocytes such as CD8+ and NK cells and may also play a role in tumor cell differentiation and metastasis (PMID: 18835598; 29085473; 9426697).

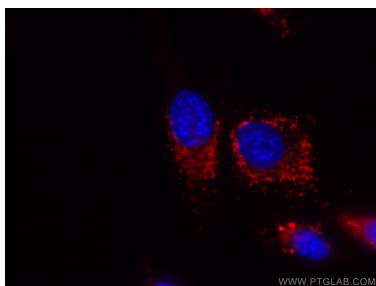
Storage

Storage:
Store at 2-8°C. Avoid exposure to light. Stable for one year after shipment.
Storage Buffer:
PBS with 0.1% sodium azide and 0.5% BSA, pH 7.3.

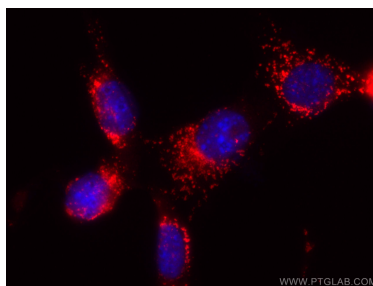
For technical support and original validation data for this product please contact:
T: 1 (888) 4PTGLAB (1-888-478-4522) (toll free in USA), or 1(312) 455-8498 (outside USA)
E: proteintech@ptglab.com
W: ptglab.com

This product is exclusively available under Proteintech Group brand and is not available to purchase from any other manufacturer.

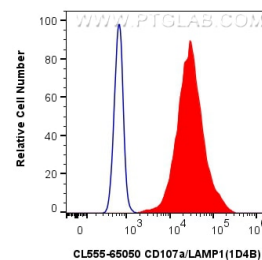
Selected Validation Data



Immunofluorescent analysis of (-20°C Ethanol) fixed NIH/3T3 cells using CoraLite®555 CD107a antibody (CL555-65050, Clone: 1D4B) at dilution of 1:100.



Immunofluorescent analysis of (-20°C Ethanol) fixed NIH/3T3 cells using CoraLite®555 CD107a antibody (CL555-65050, Clone: 1D4B) at dilution of 1:100.



1x10⁶ NIH/3T3 cells were intracellularly stained with 0.5 ug CoraLite®555 Anti-Mouse CD107a / LAMP1 (CL555-65050, Clone:1D4B) (red), or 0.5 ug CoraLite® Plus 555 Rat IgG2a Isotype Control (2A3) (CL555-65209, Clone: 2A3) (blue). Cells were fixed with 4% PFA and permeabilized with Flow Cytometry Perm Buffer (PF00011-C).