

For Research Use Only

CoraLite®555 Mouse IgG1 Isotype Control (MOPC-21)



Catalog Number:CL555-65124

Basic Information

Catalog Number: CL555-65124	GenBank Accession Number: GeneID (NCBI): 16017	Purification Method: Affinity purification
Size: 100ug, 0.2 mg/ml	Full Name: immunoglobulin heavy constant gamma 1 (G1m marker)	CloneNo.: MOPC-21
Source: Mouse		Excitation/Emission maxima wavelengths: 557 nm / 570 nm
Isotype: IgG1		

Applications

Tested Applications:
FC

Species Specificity:

Background Information

The MOPC-21 immunoglobulin is useful as an isotype-matched control. The MOPC-21 immunoglobulin has an unknown binding specificity and is used as an isotype control for mouse IgG1 antibodies. This antibody has been quality-tested for flow cytometry as negative control.

Storage

Storage:
Store at 2-8°C. Avoid exposure to light. Stable for one year after shipment.

Storage Buffer:
PBS with 0.09% sodium azide and 0.5% BSA.

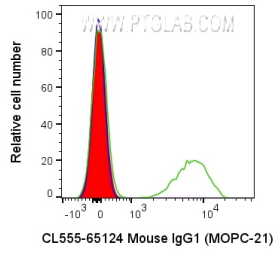
For technical support and original validation data for this product please contact:

T: 1 (888) 4PTGLAB (1-888-478-4522) (toll free
in USA), or 1(312) 455-8498 (outside USA)

E: proteintech@ptglab.com
W: ptglab.com

This product is exclusively available under Proteintech Group brand and is not available to purchase from any other manufacturer.

Selected Validation Data



1X10⁶ human PBMCs were surface stained with 0.2 ug CoraLite@555 Anti-Mouse IgG1 Isotype Control (CL555-65124, Clone:MOPC-21) (red), unstained (blue), or CL555 CD3 (UCHT1) (green). Cells were not fixed. Lymphocytes were gated.