

For Research Use Only

# CoraLite® Plus 555 Anti-Mouse CD25/IL-2RA (PC61.5)

Catalog Number: CL555-65137



## Basic Information

Catalog Number:

CL555-65137

Size:

100ug, 0.5 mg/ml

Source:

Rat

Isotype:

IgG1, lambda

GenBank Accession Number:

BC114437

GeneID (NCBI):

16184

UNIPROT ID:

P01590

Full Name:

interleukin 2 receptor, alpha chain

Purification Method:

Affinity purification

CloneNo.:

PC61.5

Excitation/Emission maxima wavelengths:

554 nm / 570 nm

## Applications

Tested Applications:

FC

Species Specificity:

mouse

## Background Information

Proliferation of T lymphocytes is triggered by the interaction of IL-2 with its specific receptor following T lymphocyte activation. The receptor for IL-2 has three forms, generated by different combinations of three different proteins, the alpha chain (IL-2R alpha), the beta chain (IL-2R beta), and the gamma chain (IL-2R gamma) (PMID: 8476561). IL-2R alpha (also known as CD25) is a type I transmembrane protein present on activated T cells, activated B cells, some thymocytes, myeloid precursors, and oligodendrocytes. CD25 is also found on natural CD4<sup>+</sup>Foxp3<sup>+</sup> Treg cells (PMID: 22585674).

## Storage

Storage:

Store at 2-8°C. Avoid exposure to light. Stable for one year after shipment.

Storage Buffer:

PBS with 0.09% sodium azide.

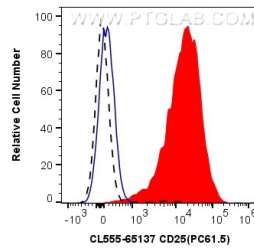
For technical support and original validation data for this product please contact:

T: 1 (888) 4PTGLAB (1-888-478-4522) (toll free in USA), or 1(312) 455-8498 (outside USA)

E: [proteintech@ptglab.com](mailto:proteintech@ptglab.com)  
W: [ptglab.com](http://ptglab.com)

This product is exclusively available under Proteintech Group brand and is not available to purchase from any other manufacturer.

## Selected Validation Data



1X10<sup>6</sup> plate-bound Anti-CD3 and Anti-CD28 stimulated (red) or unstimulated (black dashed) mouse splenocytes were surface stained with 0.5 ug CoraLite® Plus 555 Anti-Mouse CD25 (CL555-65137, Clone: PC61.5), or 0.5 ug Isotype Control (blue). Cells were not fixed.