

For Research Use Only

CoraLite® Plus 555 Anti-Human CD42b (AK2)



Catalog Number: CL555-65163

Basic Information

Catalog Number: CL555-65163	GenBank Accession Number: BC027955	Purification Method: Purified by protein-A affinity chromatography
Size: 100tests , 5 µl/test	GeneID (NCBI): 2811	CloneNo.: AK2
Source: Mouse	Full Name: glycoprotein Ib (platelet), alpha polypeptide	Excitation/Emission maxima wavelengths: 554 nm / 570 nm
Isotype: IgG1	Calculated MW: 626 aa, 69 kDa	

Applications

Tested Applications:
FC

Species Specificity:
Human

Background Information

CD42b, also known as platelet glycoprotein Ib alpha chain (GPIb alpha), is a type I transmembrane glycoprotein of 135-145 kDa (PMID: 2656709). It is expressed on platelets and megakaryocytes. CD42b and CD42c (GPIb beta) are linked by a disulphide bond to form GPIb (PMID: 7660135). GPIb forms a noncovalent complex with CD42a (GPIX) and CD42d (GPV) and acts as a receptor for von Willebrand factor (vWF) and thrombin (PMID: 7660135; 3759960). The GPIb-V-IX complex mediates vWF-dependent platelet adhesion to blood vessels. Defects in the expression of CD42b result in Bernard-Soulier syndromes and platelet-type von Willebrand disease (PMID: 9371310).

Storage

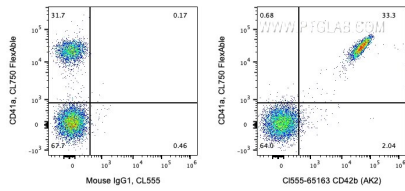
Storage:
Store at 2-8°C. Avoid exposure to light. Stable for one year after shipment.

Storage Buffer:
PBS with 0.09% sodium azide and 0.5% BSA.

For technical support and original validation data for this product please contact:
T: 1 (888) 4PTGLAB (1-888-478-4522) (toll free in USA), or 1(312) 455-8498 (outside USA) E: proteintech@ptglab.com
W: ptglab.com

This product is exclusively available under Proteintech Group brand and is not available to purchase from any other manufacturer.

Selected Validation Data



1X10⁶ human peripheral blood platelets were surface co-stained with Anti-Human CD41a labeled with FlexAble CoraLite® Plus 750 Antibody Labeling Kit for Mouse IgG1 (KFA024) and 5 ul CoraLite® Plus 555 Anti-Human CD42b (CL555-65163, Clone:AK2) or Mouse IgG1 Isotype Control. Cells were not fixed.