

For Research Use Only

CoraLite® Plus 555 Anti-Human CD21 (BU32)



Catalog Number: **CL555-65198**

Basic Information

Catalog Number:

CL555-65198

Size:

100tests , 5 µl/test

Source:

Mouse

Isotype:

IgG1, kappa

GenBank Accession Number:

BC136394

GeneID (NCBI):

1380

ENSEMBL Gene ID:

ENSG00000117322

UNIPROT ID:

P20023

Full Name:

complement component (3d/Epstein Barr virus) receptor 2

Calculated MW:

1092 aa, 119 kDa

Purification Method:

Protein G purification

CloneNo.:

BU32

Excitation/Emission maxima wavelengths:

554 nm / 570 nm

Applications

Tested Applications:

FC

Species Specificity:

Human

Background Information

CD21, also known as complement receptor type 2 (CR2), complement C3d receptor, and Epstein-Barr virus receptor, is a transmembrane protein that contains a small cytoplasmic domain, a transmembrane region and an extracellular domain consisting of 15 tandem short consensus repeat sequences (PMID: 6230668; 2551147). It is expressed on B cells, follicular dendritic cells, thymocytes and a subset of peripheral T cells (PMID: 26119182). CD21 binds complement fragments C3d, C3dg and iC3b and acts as a receptor for the Epstein-Barr virus (PMID: 7753047). On B cells, together with CD19 and CD81, CD21 forms a complex that functions as a co-receptor to the BCR (PMID: 7542009). It is involved in B cells activation and functions.

Storage

Storage:

Store at 2-8°C. Avoid exposure to light. Stable for one year after shipment.

Storage Buffer:

PBS with 0.09% sodium azide and 0.5% BSA.

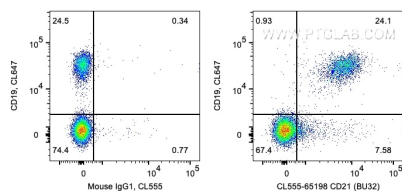
For technical support and original validation data for this product please contact:

T: 1 (888) 4PTGLAB (1-888-478-4522) (toll free in USA), or 1(312) 455-8498 (outside USA)

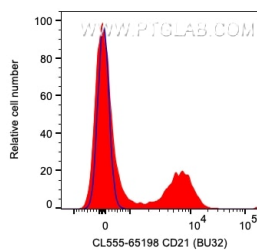
E: proteintech@ptglab.com
W: ptglab.com

This product is exclusively available under Proteintech Group brand and is not available to purchase from any other manufacturer.

Selected Validation Data



1X10⁶ human PBMCs were surface co-stained with CL647 Anti-Human CD19 and 5 ul CoraLite® Plus 555 Anti-Human CD21 (CL555-65198, Clone:BU32) or Mouse IgG1 Isotype Control. Cells were not fixed. Lymphocytes were gated.



1X10⁶ human PBMCs were surface stained with 5 ul CoraLite® Plus 555 Anti-Human CD21 (CL555-65198, Clone:BU32) (red) or Mouse IgG1 Isotype Control. Cells were not fixed. Lymphocytes were gated.