

For Research Use Only

# CoraLite® Plus 555 Rat IgG2b Isotype Control (LTF-2)



Catalog Number: **CL555-65211**

## Basic Information

Catalog Number:

CL555-65211

Size:

100ug , 0.5 mg/ml

Source:

Rat

Isotype:

IgG2b, kappa

GenBank Accession Number:

GeneID (NCBI):

Full Name:

Purification Method:

N/A

CloneNo.:

LTF-2

Excitation/Emission maxima  
wavelengths:

554 nm / 570 nm

## Applications

Tested Applications:

FC

Species Specificity:

## Background Information

The LTF-2 immunoglobulin is useful as an isotype-matched control. The LTF-2 immunoglobulin has an unknown binding specificity and is used as an isotype control for rat IgG2b antibodies. This antibody has been quality-tested for flow cytometry as negative control.

## Storage

Storage:

Store at 2-8°C. Avoid exposure to light. Stable for one year after shipment.

Storage Buffer:

PBS with 0.09% sodium azide.

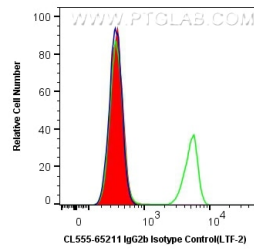
For technical support and original validation data for this product please contact:

T: 1 (888) 4PTGLAB (1-888-478-4522) (toll free  
in USA), or 1(312) 455-8498 (outside USA)

E: [proteintech@ptglab.com](mailto:proteintech@ptglab.com)  
W: [ptglab.com](http://ptglab.com)

This product is exclusively available under Proteintech Group brand and is not available to purchase from any other manufacturer.

## Selected Validation Data



$1 \times 10^6$  BALB/c mouse splenocytes were surface stained with 0.5  $\mu$ g CoraLite® Plus 555 Rat IgG2b Isotype Control (CL555-65211, Clone: LTF-2) (red), or 0.5  $\mu$ g CoraLite® Plus 555 Anti-Mouse CD4 (green), or unstained (blue). Cells were not fixed.