

For Research Use Only

# CoraLite® Plus 555 Anti-Human HLA-DR (L243)



Catalog Number: **CL555-65218**

## Basic Information

Catalog Number:

CL555-65218

Size:

100tests , 5 µl/test

Source:

Mouse

Isotype:

IgG2a, kappa

GenBank Accession Number:

BC032350

GeneID (NCBI):

3122

ENSEMBL Gene ID:

ENSG00000204287

UNIPROT ID:

P01903

Full Name:

major histocompatibility complex,  
class II, DR alpha

Calculated MW:

254 aa, 29 kDa

Purification Method:

Protein A purification

CloneNo.:

L243

Excitation/Emission maxima  
wavelengths:

554 nm / 570 nm

## Applications

Tested Applications:

FC

Species Specificity:

Human

## Storage

Storage:

Store at 2-8°C. Avoid exposure to light. Stable for one year after shipment.

Storage Buffer:

PBS with 0.09% sodium azide and 0.5% BSA.

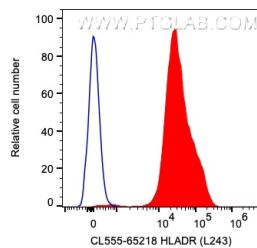
For technical support and original validation data for this product please contact:

T: 1 (888) 4PTGLAB (1-888-478-4522) (toll free  
in USA), or 1(312) 455-8498 (outside USA)

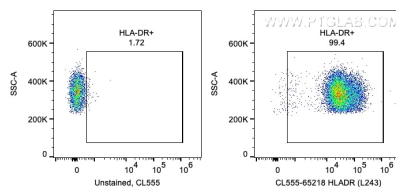
E: [proteintech@ptglab.com](mailto:proteintech@ptglab.com)  
W: [ptglab.com](http://ptglab.com)

This product is exclusively available under Proteintech Group brand and is not available to purchase from any other manufacturer.

## Selected Validation Data



1X10<sup>6</sup> human PBMCs were surface stained with 5 ul CoraLite® Plus 555 Anti-Human HLA-DR (CL555-65218, Clone:L243) (red) or unstained. Cells were not fixed. Monocytes were gated.



1X10<sup>6</sup> human PBMCs were surface stained with 5 ul CoraLite® Plus 555 Anti-Human HLA-DR (CL555-65218, Clone:L243) or unstained. Cells were not fixed. Monocytes were gated.