

For Research Use Only

# CoraLite® Plus 555 Mouse IgG2a isotype control (11A1B2)



Catalog Number:CL555-66360-2

## Basic Information

Catalog Number:

CL555-66360-2

Size:

100ug , 0.2 mg/mL

Source:

Mouse

Isotype:

IgG2a

GenBank Accession Number:

GeneID (NCBI):

Full Name:

Purification Method:

Protein A purification

CloneNo.:

11A1B2

Excitation/Emission maxima wavelengths:

554 nm / 570 nm

## Applications

Tested Applications:

FC

Species Specificity:

Megathura crenulata

## Background Information

This antibody is used as the isotype control of mouse IgG2a. It can be used as the isotype control in Flow Cytometry, Immuno-Precipitation and other experiments. The immunogen of this antibody is Keyhole Limpet Hemocyanin (KLH).

## Storage

Storage:

Store at 2-8°C. Avoid exposure to light. Stable for one year after shipment.

Storage Buffer:

PBS with 0.09% sodium azide and 0.5% BSA.

For technical support and original validation data for this product please contact:

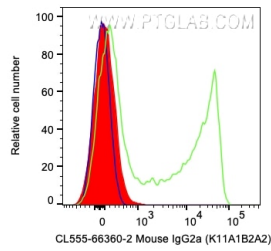
T: 1 (888) 4PTGLAB (1-888-478-4522) (toll free in USA), or 1(312) 455-8498 (outside USA)

E: [proteintech@ptglab.com](mailto:proteintech@ptglab.com)

W: [ptglab.com](http://ptglab.com)

This product is exclusively available under Proteintech Group brand and is not available to purchase from any other manufacturer.

## Selected Validation Data



1X10<sup>6</sup> human PBMCs were surface stained with 0.2 ug CoraLite® Plus 555 Anti-Mouse IgG2a isotype control (CL555-66360-2, Clone:11A1B2) (red), CL555 Anti-Human CD45RO (green), or unstained (blue). Cells were not fixed. Lymphocytes were gated.