

For Research Use Only

CoraLite®555-conjugated G6PD Monoclonal antibody

Catalog Number:CL555-66373

Featured Product



Basic Information

Catalog Number:

CL555-66373

Size:

100ul , Concentration: 1000 ug/ml by
Nanodrop;

Source:

Mouse

Isotype:

IgG2a

Immunogen Catalog Number:

AG21862

GenBank Accession Number:

BC000337

GeneID (NCBI):

2539

UNIPROT ID:

P11413

Full Name:

glucose-6-phosphate dehydrogenase

Calculated MW:

59 kDa

Observed MW:

60 kDa

Purification Method:

Protein A purification

CloneNo.:

2A7B12

Recommended Dilutions:

IF/ICC 1:50-1:500

Excitation/Emission maxima

wavelengths:

557 nm / 570 nm

Applications

Tested Applications:

IF/ICC, FC (Intra)

Species Specificity:

human, mouse, rat

Positive Controls:

IF/ICC : HeLa cells,

Background Information

G6PD(Glucose-6-phosphate 1-dehydrogenase) belongs to the glucose-6-phosphate dehydrogenase family. It is a housekeeping enzyme encoded in mammals by an X-linked gene. G6PD has important functions in intermediary metabolism because it catalyzes the first step in the pentose phosphate pathway and provides reductive potential in the form of NADPH.(PMID:7489710). This protein has 3 isoforms produced by alternative splicing.

Storage

Storage:

Store at -20°C. Avoid exposure to light. Stable for one year after shipment.

Storage Buffer:

PBS with 50% Glycerol, 0.05% Proclin300, 0.5% BSA, pH 7.3.

Aliquoting is unnecessary for -20°C storage

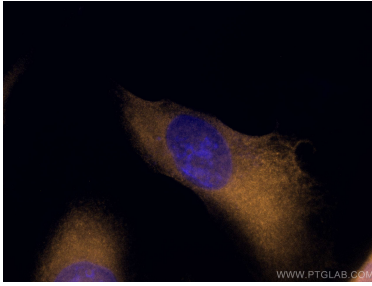
For technical support and original validation data for this product please contact:

T: 1 (888) 4PTGLAB (1-888-478-4522) (toll free
in USA), or 1(312) 455-8498 (outside USA)

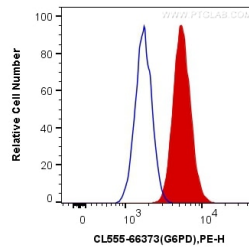
E: proteintech@ptglab.com
W: ptglab.com

This product is exclusively available under Proteintech Group brand and is not available to purchase from any other manufacturer.

Selected Validation Data



Immunofluorescent analysis of (-20°C Methanol) fixed HeLa cells using CoraLite®555 G6PD antibody (CL555-66373, Clone: 2A7B12) at dilution of 1:200.



1X10⁶ HeLa cells were intracellularly stained with 0.4 ug CoraLite®555 Anti-Human G6PD (CL555-66373, Clone:2A7B12) (red), or 0.4 ug Control Antibody. Cells were fixed with 4% PFA and permeabilized with Flow Cytometry Perm Buffer (PF00011-C).