

For Research Use Only

CoraLite®555-conjugated SLP76 Monoclonal antibody



Catalog Number:CL555-66465

Basic Information

Catalog Number: CL555-66465	GenBank Accession Number: BC016618	Purification Method: Protein G purification
Size: 100ul , Concentration: 1000 µg/ml by Nanodrop;	GeneID (NCBI): 3937	CloneNo.: 4H10B1
Source: Mouse	Full Name: Lymphocyte cytosolic protein 2 (SH2 domain containing leukocyte protein of 76kDa)	Excitation/Emission maxima wavelengths: 555 nm / 570 nm
Isotype: IgG1	Calculated MW: 533 aa, 60 kDa	
Immunogen Catalog Number: AG3432		

Applications

Tested Applications:
FC (Intra)

Species Specificity:
human

Background Information

SLP76, also named as SLP76, is an adapter protein that acts as a substrate of the T cell antigen receptor (TCR)-activated protein tyrosine kinase pathway. It contains an N-terminal leucine Zip motif, a tyrosine-rich domain, a proline-rich domain and a C-terminal SH2 domain. It is constitutively associated with the growth factor receptor-bound protein 2 (Grb2)-related adapter protein 2 (Grap2, a.k.a. GADS) through the interaction of its proline residues with one of the SH3 domains of Grap2. SLP76 associates with growth factor receptor bound protein 2 (Grp2), and is thought to play a role TCR-mediated intracellular signal transduction. SLP76 is also expressed by mast cells, and mast cell activation was markedly impaired in SLP76-deficient mice.

Storage

Storage:
Store at -20°C. Avoid exposure to light.

Storage Buffer:
PBS with 50% Glycerol, 0.05% Proclin300, 0.5% BSA, pH 7.3.

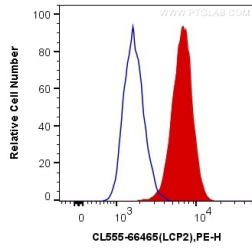
Aliquoting is unnecessary for -20°C storage

***** 20ul sizes contain 0.1%BSA**

For technical support and original validation data for this product please contact:
T: 1 (888) 4PTGLAB (1-888-478-4522) (toll free in USA), or 1(312) 455-8498 (outside USA)
E: proteintech@ptglab.com
W: ptglab.com

This product is exclusively available under Proteintech Group brand and is not available to purchase from any other manufacturer.

Selected Validation Data



1X10⁶ Jurkat cells were intracellularly stained with 0.4 ug CoraLite®555 Anti-Human SLP76 (CL555-66465, Clone:4H10B1) (red), or 0.4 ug Control Antibody. Cells were fixed with 4% PFA and permeabilized with Flow Cytometry Perm Buffer (PF00011-C).