

For Research Use Only

CoraLite®555-conjugated Cytokeratin 7 Monoclonal antibody



Catalog Number:CL555-66483

Featured Product

Basic Information

Catalog Number: CL555-66483	GenBank Accession Number: BC002700	Purification Method: Protein A purification
Size: 100ul , Concentration: 1000 µg/ml by Nanodrop;	GeneID (NCBI): 3855	CloneNo.: 2E1G5
Source: Mouse	Full Name: keratin 7	Recommended Dilutions: IF 1:50-1:500
Isotype: IgG2a	Calculated MW: 469 aa, 51 kDa	Excitation/Emission maxima wavelengths: 555 nm / 570 nm
Immunogen Catalog Number: AG7895	Observed MW: 51 kDa	

Applications

Tested Applications: FC, IF	Positive Controls: IF : human prostate cancer tissue,
Species Specificity: Human	

Background Information

Keratins are a large family of proteins that form the intermediate filament cytoskeleton of epithelial cells, which are classified into two major sequence types. Type I keratins are a group of acidic intermediate filament proteins, including K9-K23, and the hair keratins Ha1-Ha8. Type II keratins are the basic or neutral counterparts to the acidic type I keratins, including K1-K8, and the hair keratins, Hb1-Hb6. KRT7, also named as cytokeratin 7, is one member of type II basic cytokeratin. It is specifically expressed in the simple epithelia lining the cavities of the internal organs and in the gland ducts and blood vessels, and their neoplasms. KRT7 is marker of epithelial tissues, but not present in carcinomas of stratified squamous cell origin. This antibody is specifically against KRT7.

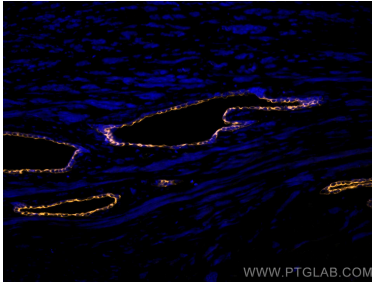
Storage

Storage:
Store at -20°C. Avoid exposure to light.
Storage Buffer:
PBS with 50% Glycerol, 0.05% Proclin300, 0.5% BSA, pH 7.3.
Aliquoting is unnecessary for -20°C storage

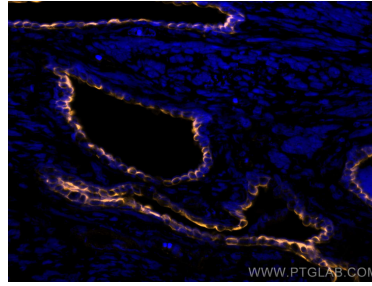
For technical support and original validation data for this product please contact:
T: 1 (888) 4PTGLAB (1-888-478-4522) (toll free in USA), or 1(312) 455-8498 (outside USA)
E: proteintech@ptglab.com
W: ptglab.com

This product is exclusively available under Proteintech Group brand and is not available to purchase from any other manufacturer.

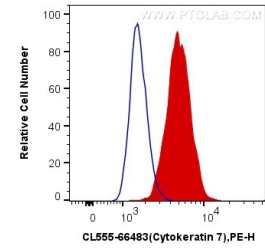
Selected Validation Data



Immunofluorescent analysis of (4% PFA) fixed human prostate cancer tissue using CoraLite®555 Cytokeratin 7 antibody (CL555-66483, Clone: 2E1G5) at dilution of 1:200.



Immunofluorescent analysis of (4% PFA) fixed human prostate cancer tissue using CoraLite®555 Cytokeratin 7 antibody (CL555-66483, Clone: 2E1G5) at dilution of 1:200.



1X10⁶ HeLa cells were intracellularly stained with 0.5 ug CoraLite®555 Anti-Human Cytokeratin 7 (CL555-66483, Clone:2E1G5) (red), or 0.5 ug Control Antibody. Cells were fixed with 4% PFA and permeabilized with Flow Cytometry Perm Buffer (PF00011-C).