

For Research Use Only

# CoraLite®555-conjugated Calretinin Monoclonal antibody



Catalog Number:CL555-66496

## Basic Information

<b>Catalog Number:</b> CL555-66496	<b>GenBank Accession Number:</b> BC015484	<b>Purification Method:</b> Protein G purification
<b>Size:</b> 100ul , Concentration: 1000 µg/ml by Nanodrop;	<b>GeneID (NCBI):</b> 794	<b>CloneNo.:</b> 2D7A9
<b>Source:</b> Mouse	<b>UNIPROT ID:</b> P22676	<b>Recommended Dilutions:</b> IF-P 1:50-1:500 IF/ICC 1:50-1:500
<b>Isotype:</b> IgG1	<b>Full Name:</b> calbindin 2	<b>Excitation/Emission maxima wavelengths:</b> 557 nm / 570 nm
<b>Immunogen Catalog Number:</b> AG2924	<b>Calculated MW:</b> 29 kDa	
	<b>Observed MW:</b> 29 kDa	

## Applications

<b>Tested Applications:</b> IF/ICC, IF-P	<b>Positive Controls:</b>
<b>Species Specificity:</b> human, mouse, rat, pig	IF-P : human appendicitis tissue, IF/ICC : SH-SY5Y cells,

## Background Information

Calbindin 2 (calretinin), is an intracellular calcium-binding protein belonging to the troponin C superfamily. Members of this protein family have six EF-hand domains which bind calcium. This protein plays a role in diverse cellular functions, including message targeting and intracellular calcium buffering. It also functions as a modulator of neuronal excitability, and is a diagnostic marker for some human diseases, including Hirschsprung disease and some cancers. Calretinin is a useful marker for differentiating malignant mesothelioma from carcinomas.

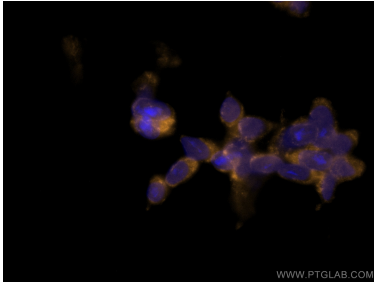
## Storage

**Storage:**  
Store at -20°C. Avoid exposure to light.  
**Storage Buffer:**  
PBS with 50% Glycerol, 0.05% Proclin300, 0.5% BSA, pH 7.3.  
Aliquoting is unnecessary for -20°C storage

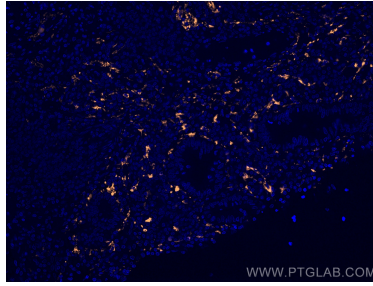
For technical support and original validation data for this product please contact:  
T: 1 (888) 4PTGLAB (1-888-478-4522) (toll free in USA), or 1(312) 455-8498 (outside USA)  
E: [proteintech@ptglab.com](mailto:proteintech@ptglab.com)  
W: [ptglab.com](http://ptglab.com)

This product is exclusively available under Proteintech Group brand and is not available to purchase from any other manufacturer.

## Selected Validation Data



Immunofluorescent analysis of (-20°C Ethanol) fixed SH-SY5Y cells using CoraLite®555 Calretinin antibody (CL555-66496, Clone: 2D7A9) at dilution of 1:200.



Immunofluorescent analysis of (4% PFA) fixed human appendicitis tissue using CoraLite®555 Calretinin antibody (CL555-66496, Clone: 2D7A9) at dilution of 1:200.