

For Research Use Only

CoraLite®555-conjugated TPT1 Monoclonal antibody

Catalog Number:CL555-66713

Featured Product



Basic Information

Catalog Number:

CL555-66713

Size:

100ul , Concentration: 1000 ug/ml by Nanodrop;

Source:

Mouse

Isotype:

IgG1

Immunogen Catalog Number:

AG27651

GenBank Accession Number:

BC003352

GeneID (NCBI):

7178

UNIPROT ID:

P13693

Full Name:

tumor protein, translationally-controlled 1

Calculated MW:

22 kDa

Observed MW:

22 kDa

Purification Method:

Protein G purification

CloneNo.:

1G6A10

Recommended Dilutions:

IF/ICC 1:50-1:500

Excitation/Emission maxima wavelengths:

557 nm / 570nm

Applications

Tested Applications:

IF/ICC

Species Specificity:

Human, Mouse, Rat

Positive Controls:

IF/ICC : HEK-293 cells,

Background Information

The translationally controlled tumor protein (TPT1, also known as TCTP) is a highly conserved, abundantly expressed protein associated with cell growth and apoptosis regulation. It is overexpressed in most tumor cells and its down-regulation decreases the viability of those cells. This antibody detected 22 kDa TPT1 in lysates.

Storage

Storage:

Store at -20°C. Avoid exposure to light. Stable for one year after shipment.

Storage Buffer:

PBS with 50% Glycerol, 0.05% Proclin300, 0.5% BSA, pH 7.3.

Aliquoting is unnecessary for -20°C storage

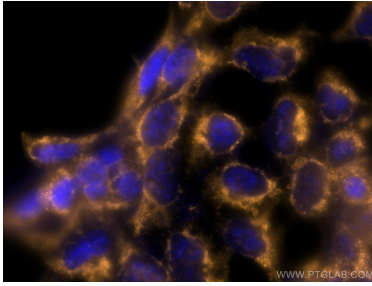
For technical support and original validation data for this product please contact:

T: 1 (888) 4PTGLAB (1-888-478-4522) (toll free in USA), or 1(312) 455-8498 (outside USA)

E: proteintech@ptglab.com
W: ptglab.com

This product is exclusively available under Proteintech Group brand and is not available to purchase from any other manufacturer.

Selected Validation Data



Immunofluorescent analysis of (-20°C Methanol) fixed HEK-293 cells using CoraLite®555 TPT1 antibody (CL555-66713, Clone: 1G6A10) at dilution of 1:200.