

CoraLite®555-conjugated STK11/LKB1 Monoclonal antibody

Catalog Number: **CL555-66719**

Basic Information

Catalog Number: CL555-66719	GenBank Accession Number: BC007981	Purification Method: Protein G purification
Size: 100ul , Concentration: 1000 µg/ml by Nanodrop;	GeneID (NCBI): 6794	CloneNo.: 1H8E4
Source: Mouse	UNIPROT ID: Q15831	Recommended Dilutions: IF/ICC 1:200-1:800
Isotype: IgG1	Full Name: serine/threonine kinase 11	Excitation/Emission maxima wavelengths: 557 nm / 570 nm
Immunogen Catalog Number: AG13436	Calculated MW: 49 kDa	
	Observed MW: 45-49 kDa	

Applications

Tested Applications: IF	Positive Controls: IF/ICC : HeLa cells,
Species Specificity: Human, Mouse, Rat	

Background Information

STK11 (serine/threonine-protein kinase 11) is also named as LKB1, PJS, and belongs to the protein kinase superfamily. It controls the activity of AMP-activated protein kinase (AMPK) family members, thereby playing a role in various processes such as cell metabolism, cell polarity, apoptosis and DNA damage response. The tumour suppressor protein LKB1 is a serine/threonine kinase that has been causally linked to Peutz-Jeghers syndrome (PJS). Defects in STK11 are a cause of Peutz-Jeghers syndrome (PJS) and defects in STK11 have been associated with testicular germ cell tumor (TGCT) and some sporadic cancers, especially lung cancers. STK11 has 2 isoforms with MW of 49 kDa and 45 kDa, and can be detected as 50-54 kDa after posttranslational modification.

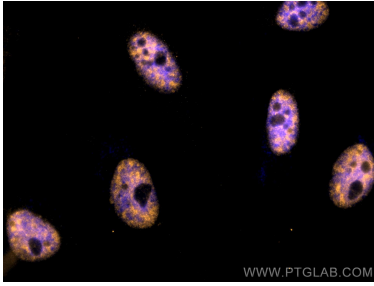
Storage

Storage:
Store at -20°C. Avoid exposure to light. Stable for one year after shipment.
Storage Buffer:
PBS with 50% Glycerol, 0.05% Proclin300, 0.5% BSA, pH 7.3.
Aliquoting is unnecessary for -20°C storage

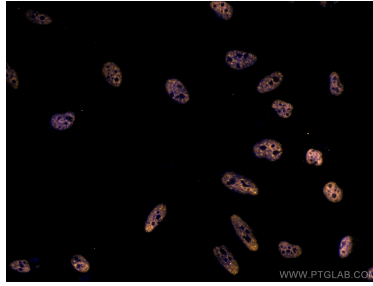
For technical support and original validation data for this product please contact:
T: 1 (888) 4PTGLAB (1-888-478-4522) (toll free in USA), or 1(312) 455-8498 (outside USA)
E: proteintech@ptglab.com
W: ptglab.com

This product is exclusively available under Proteintech Group brand and is not available to purchase from any other manufacturer.

Selected Validation Data



Immunofluorescent analysis of (4% PFA) fixed HeLa cells using CoraLite®555 STK11/LKB1 antibody (CL555-66719, Clone: 1H8E4) at dilution of 1:400.



Immunofluorescent analysis of (4% PFA) fixed HeLa cells using CoraLite®555 STK11/LKB1 antibody (CL555-66719, Clone: 1H8E4) at dilution of 1:400.