

For Research Use Only

CoraLite®555-conjugated Bcl2 Monoclonal antibody

Catalog Number:CL555-66799



Basic Information

Catalog Number: CL555-66799	GenBank Accession Number: NM-009741	Purification Method: Protein G purification
Size: 100ul , Concentration: 1000 ug/ml by Nanodrop;	GeneID (NCBI): 12043	CloneNo.: 1B5B9
Source: Mouse	Full Name: B-cell leukemia/lymphoma 2	Recommended Dilutions: IF/ICC 1:50-1:500
Isotype: IgG1	Calculated MW: 26 kDa	Excitation/Emission maxima wavelengths: 557 nm / 570 nm
Immunogen Catalog Number: AG24261	Observed MW: 26 kDa	

Applications

Tested Applications: IF/ICC, FC (Intra)	Positive Controls: IF/ICC : NIH/3T3 cells,
Species Specificity: mouse	

Background Information

Bcl2 is a member of the B cell lymphoma 2 protein family. Members of this family regulate cell death in multiple cell types and can have either proapoptotic or antiapoptotic activities. The protein encoded by this gene inhibits mitochondrial-mediated apoptosis. This protein is an integral outer mitochondrial membrane protein that functions as part of signaling pathway that controls mitochondrial permeability in response to apoptotic stimuli. This protein may also play a role in neuron cell survival and autophagy. Abnormal expression and chromosomal translocations of this gene are associated with cancer progression in numerous tissues.

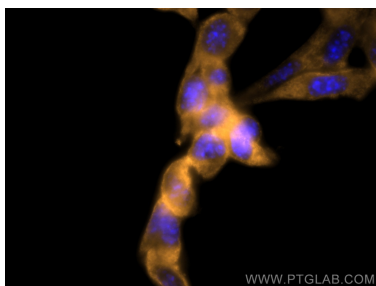
Storage

Storage:
Store at -20°C. Avoid exposure to light. Stable for one year after shipment.
Storage Buffer:
PBS with 50% Glycerol, 0.05% Proclin300, 0.5% BSA, pH 7.3.
Aliquoting is unnecessary for -20°C storage

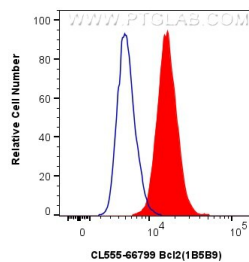
For technical support and original validation data for this product please contact:
T: 1 (888) 4PTGLAB (1-888-478-4522) (toll free in USA), or 1(312) 455-8498 (outside USA)
E: proteintech@ptglab.com
W: ptglab.com

This product is exclusively available under Proteintech Group brand and is not available to purchase from any other manufacturer.

Selected Validation Data



Immunofluorescent analysis of (-20°C Methanol) fixed NIH/3T3 cells using CoraLite®555 Bcl2 antibody (CL555-66799, Clone: 1B5B9) at dilution of 1:200.



1x10⁶ NIH/3T3 cells were intracellularly stained with 0.5 ug CoraLite®555-conjugated Bcl2 Monoclonal antibody (CL555-66799, Clone:1B5B9) (red), or 0.5 ug CoraLite® Plus 555 Mouse IgG1 Isotype Control (1F8D3) (CL555-66360-1, Clone: 1F8D3) (blue). Cells were fixed with 4% PFA and permeabilized with Flow Cytometry Perm Buffer (PF00011-C).