

For Research Use Only

CoraLite®555-conjugated DDX21 Monoclonal antibody



Catalog Number:CL555-66925

Basic Information

Catalog Number: CL555-66925	GenBank Accession Number: BC008071	Purification Method: Protein G purification
Size: 100ul , Concentration: 1000 µg/ml by Nanodrop;	GeneID (NCBI): 9188	CloneNo.: 1B9C8
Source: Mouse	Full Name: DEAD (Asp-Glu-Ala-Asp) box polypeptide 21	Recommended Dilutions: IF 1:250-1:1000
Isotype: IgG1	Calculated MW: 783 aa, 87 kDa	Excitation/Emission maxima wavelengths: 555 nm / 570 nm
Immunogen Catalog Number: AG17850	Observed MW: 90-95 kDa	

Applications

Tested Applications: IF	Positive Controls: IF : HepG2 cells,
Species Specificity: Human	

Background Information

DDX21 protein belongs to DEAD box protein family which is characterized by the conserved motif Asp-Glu-Ala-Asp (DEAD). As a putative RNA helicase, DDX21 unwinds double-stranded RNA, folds single-stranded RNA and is involved in process including ribosomal RNA biogenesis, RNA editing and general transcription. Interaction of DDX21 and c-Jun was reported in ribosomal RNA processing.

Storage

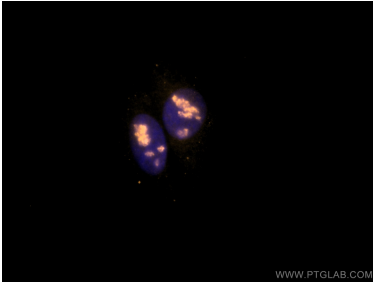
Storage:
Store at -20°C. Avoid exposure to light. Stable for one year after shipment.
Storage Buffer:
PBS with 50% Glycerol, 0.05% Proclin300, 0.5% BSA, pH 7.3.
Aliquoting is unnecessary for -20°C storage

*** 20ul sizes contain 0.1% BSA

For technical support and original validation data for this product please contact:
T: 1 (888) 4PTGLAB (1-888-478-4522) (toll free in USA), or 1(312) 455-8498 (outside USA) E: proteintech@ptglab.com W: ptglab.com

This product is exclusively available under Proteintech Group brand and is not available to purchase from any other manufacturer.

Selected Validation Data



Immunofluorescent analysis of (4% PFA) fixed HepG2 cells using CoraLite®555 DDX21 antibody (CL555-66925, Clone: 1B9C8) at dilution of 1:500.