

For Research Use Only

CoraLite®555-conjugated SSRP1 Monoclonal antibody



Catalog Number:CL555-67313

Basic Information

Catalog Number: CL555-67313	GenBank Accession Number: BC005116	Purification Method: Protein A purification
Size: 100ul , Concentration: 1000 µg/ml by Nanodrop;	GeneID (NCBI): 6749	CloneNo.: 3D3H4
Source: Mouse	Full Name: structure specific recognition protein 1	Recommended Dilutions: IF 1:50-1:500
Isotype: IgG2b	Calculated MW: 81 kDa	Excitation/Emission maxima wavelengths: 555 nm / 570 nm
Immunogen Catalog Number: AG8318	Observed MW: 86 kDa	

Applications

Tested Applications: FC (Intra), IF	Positive Controls: IF : HepG2 cells,
Species Specificity: Human, mouse, rat	

Background Information

Storage

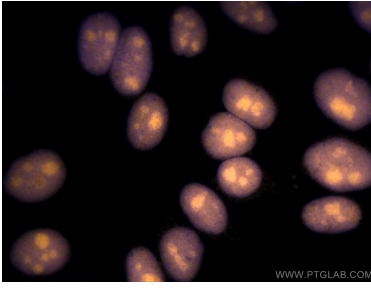
Storage:
Store at -20°C. Avoid exposure to light.
Storage Buffer:
PBS with 50% Glycerol, 0.05% Proclin300, 0.5% BSA, pH 7.3.
Aliquoting is unnecessary for -20°C storage

*** 20ul sizes contain 0.1% BSA

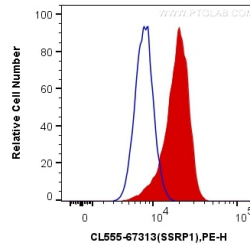
For technical support and original validation data for this product please contact:
T: 1 (888) 4PTGLAB (1-888-478-4522) (toll free in USA), or 1(312) 455-8498 (outside USA)
E: proteintech@ptglab.com
W: ptglab.com

This product is exclusively available under Proteintech Group brand and is not available to purchase from any other manufacturer.

Selected Validation Data



Immunofluorescent analysis of (4% PFA) fixed HepG2 cells using CoraLite®555 SSRP1 antibody (CL555-67313, Clone: 3D3H4) at dilution of 1:200.



1X10⁶ HeLa cells were intracellularly stained with 0.4 ug CoraLite®555 Anti-Human SSRP1 (CL555-67313, Clone:3D3H4) (red), or 0.4 ug Control Antibody. Cells were fixed and permeabilized with Transcription Factor Staining Buffer Kit (PF00011).