

For Research Use Only

CoraLite®555-conjugated MTHFD1 Monoclonal antibody



Catalog Number:CL555-67670

Basic Information

Catalog Number: CL555-67670	GenBank Accession Number: BC009806	Purification Method: Protein G purification
Size: 100ul , Concentration: 1000 µg/ml by Nanodrop;	GeneID (NCBI): 4522	CloneNo.: 2B1G3
Source: Mouse	Full Name: methylenetetrahydrofolate dehydrogenase (NADP+ dependent) 1,	Recommended Dilutions: IF 1:50-1:500
Isotype: IgG1	Immunogen Catalog Number: AG24553	Excitation/Emission maxima wavelengths: 557 nm / 570 nm
	Calculated MW: 101 kDa	

Applications

Tested Applications: IF	Positive Controls: IF : HEK-293 cells,
Species Specificity: Human, Mouse, Rat	

Background Information

MTHFD1 is a trifunctional enzyme involved in the pathway tetrahydrofolate interconversion, which is part of One-carbon metabolism. MTHFD1 is associated with HCC and CRC progression. It has been reported that MTHFD-deficient patient fibroblasts exhibit enriched MTHFD1 in the nucleus which is critical for de novo dTMP synthesis. (PMID: 31133746, 30997850, 31421459, 25548164)

Storage

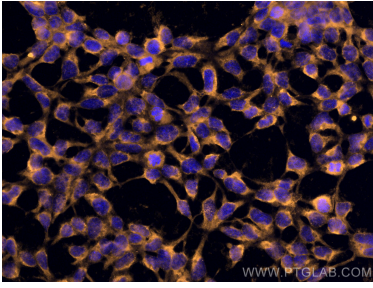
Storage:
Store at -20°C. Avoid exposure to light. Stable for one year after shipment.
Storage Buffer:
PBS with 50% Glycerol, 0.05% Proclin300, 0.5% BSA, pH 7.3.
Aliquoting is unnecessary for -20°C storage

*** 20ul sizes contain 0.1% BSA

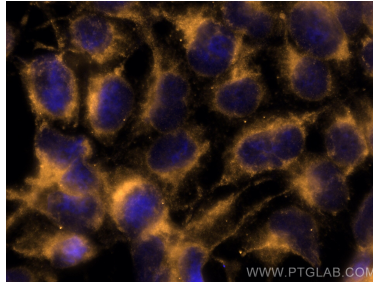
For technical support and original validation data for this product please contact:
T: 1 (888) 4PTGLAB (1-888-478-4522) (toll free in USA), or 1(312) 455-8498 (outside USA)
E: proteintech@ptglab.com
W: ptglab.com

This product is exclusively available under Proteintech Group brand and is not available to purchase from any other manufacturer.

Selected Validation Data



Immunofluorescent analysis of (-20°C Ethanol) fixed HEK-293 cells using CoraLite®555 MTHFD1 antibody (CL555-67670, Clone: 2B1G3) at dilution of 1:200.



Immunofluorescent analysis of (-20°C Ethanol) fixed HEK-293 cells using CoraLite®555 MTHFD1 antibody (CL555-67670, Clone: 2B1G3) at dilution of 1:200.