

For Research Use Only

CoraLite®555-conjugated LARP1 Monoclonal antibody

Catalog Number:CL555-67810



Basic Information

Catalog Number:

CL555-67810

Size:

100ul , Concentration: 1000 ug/ml by
Nanodrop;

Source:

Mouse

Isotype:

IgG1

Immunogen Catalog Number:

AG29993

GenBank Accession Number:

BC033856

GeneID (NCBI):

23367

UNIPROT ID:

Q6PKG0

Full Name:

La ribonucleoprotein domain family,
member 1

Calculated MW:

1096 aa, 124 kDa

Observed MW:

140-150 kDa

Purification Method:

Protein G purification

CloneNo.:

2E9F2

Recommended Dilutions:

IF/ICC 1:200-1:800

Excitation/Emission maxima wavelengths:

557 nm / 570 nm

Applications

Tested Applications:

IF/ICC, FC (Intra)

Species Specificity:

human, mouse, rat

Positive Controls:

IF/ICC : HepG2 cells,

Background Information

LARP1, full named as La-related Protein 1, is an oncogenic RNA-binding protein required for ribosome biogenesis and cancer cell survival. (PMID: 32286153)It's has been proposed to function downstream of mTORC1 to regulate the translation of 5'TOP mRNAs such as those encoding ribosome proteins (RP). (PMID: 28650797) LARP1 has 2 isoforms with MW of 123-150KDa. With CL647, immunoflorescence detected location in cytoplasm.

Storage

Storage:

Store at -20°C. Avoid exposure to light. Stable for one year after shipment.

Storage Buffer:

PBS with 50% Glycerol, 0.05% Proclin300, 0.5% BSA, pH 7.3.

Aliquoting is unnecessary for -20°C storage

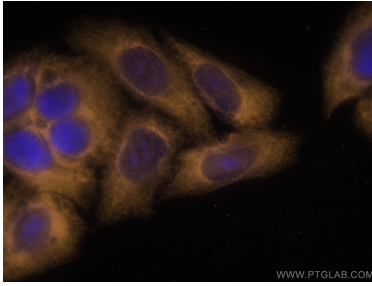
For technical support and original validation data for this product please contact:

T: 1 (888) 4PTGLAB (1-888-478-4522) (toll free
in USA), or 1(312) 455-8498 (outside USA)

E: proteintech@ptglab.com
W: ptglab.com

This product is exclusively available under Proteintech
Group brand and is not available to purchase from any
other manufacturer.

Selected Validation Data



Immunofluorescent analysis of (-20°C Ethanol) fixed HepG2 cells using Coralite®555 LARP1 antibody (CL555-67810, Clone: 2E9F2) at dilution of 1:400.

1X10⁶ HepG2 cells were intracellularly stained with 0.4 ug Coralite®555 Anti-Human LARP1 (CL555-67810, Clone:2E9F2) (red), or 0.4 ug Control Antibody. Cells were fixed with 4% PFA and permeabilized with Flow Cytometry Perm Buffer (PF00011-C).