

For Research Use Only

CoraLite®555-conjugated CD45 Recombinant antibody



Catalog Number:CL555-80297

Basic Information

Catalog Number: CL555-80297	GenBank Accession Number: BC014239	Purification Method: Protein A purification
Size: 100ul , Concentration: 1000 µg/ml by Nanodrop;	GeneID (NCBI): 5788	CloneNo.: 6019
Source: Rabbit	Full Name: protein tyrosine phosphatase, receptor type, C	Recommended Dilutions: IF 1:50-1:500
Isotype: IgG	Calculated MW: 1304 aa, 147 kDa	Excitation/Emission maxima wavelengths: 557 nm / 570 nm
Immunogen Catalog Number: AG13712	Observed MW: 220-240 kDa	

Applications

Tested Applications: FC (Intra), IF	Positive Controls: IF : mouse spleen tissue,
Species Specificity: Human, Rat, Mouse	

Background Information

CD45, also known as leukocyte common antigen (LCA), B220, and T200, is a 180-240 kD single chain type I membrane glycoprotein. It is a tyrosine phosphatase expressed on the plasma membrane of all hematopoietic cells, except erythrocytes and platelets. CD45 is a signaling molecule that regulates a variety of cellular processes including cell growth, differentiation, cell cycle, and oncogenic transformation. CD45 is one of the best negative selection markers for characterizing and/or isolating human mesenchymal stem cells from bone marrow and other sources. Along with the positive selection markers (such as CD29, CD44, CD90, CD105 and CD166), negative selection markers (such as CD34 and CD45) are used for MSC identification.

Storage

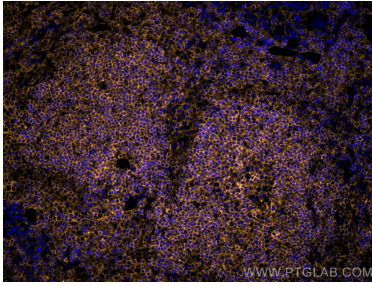
Storage:
Store at -20°C. Avoid exposure to light. Stable for one year after shipment.
Storage Buffer:
PBS with 50% Glycerol, 0.05% Proclin300, 0.5% BSA, pH 7.3.
Aliquoting is unnecessary for -20°C storage

*** 20ul sizes contain 0.1% BSA

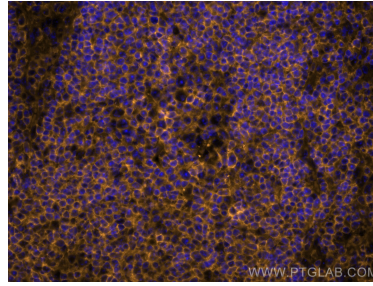
For technical support and original validation data for this product please contact:
T: 1 (888) 4PTGLAB (1-888-478-4522) (toll free in USA), or 1(312) 455-8498 (outside USA) E: proteintech@ptglab.com W: ptglab.com

This product is exclusively available under Proteintech Group brand and is not available to purchase from any other manufacturer.

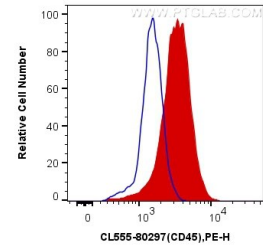
Selected Validation Data



Immunofluorescent analysis of (4% PFA) fixed mouse spleen tissue using CoraLite®555 CD45 antibody (CL555-80297, Clone: 6O19) at dilution of 1:200.



Immunofluorescent analysis of (4% PFA) fixed mouse spleen tissue using CoraLite®555 CD45 antibody (CL555-80297, Clone: 6O19) at dilution of 1:200.



1X10⁶ Raji cells were intracellularly stained with 0.4 ug CoraLite®555 Anti-Human CD45 (CL555-80297, Clone:6O19) (red), or 0.4 ug x. Cells were fixed with 4% PFA and permeabilized with Flow Cytometry Perm Buffer (PF00011-C).