

For Research Use Only

CoraLite®555-conjugated Beta Tubulin Recombinant antibody



Catalog Number:CL555-80713

Basic Information

Catalog Number: CL555-80713	GenBank Accession Number: BC000748	Purification Method: Protein A purification
Size: 100ul , Concentration: 1000 µg/ml by Nanodrop;	GeneID (NCBI): 10381	CloneNo.: 2013
Source: Rabbit	Full Name: tubulin, beta 3	Recommended Dilutions: IF 1:200-1:800
Isotype: IgG	Calculated MW: 450 aa, 50 kDa	Excitation/Emission maxima wavelengths: 555 nm / 570 nm
Immunogen Catalog Number: AG0117	Observed MW: 50-55 kDa	

Applications

Tested Applications: IF	Positive Controls: IF : C2C12 cells,
Species Specificity: Human, mouse, rat, zebrafish	

Background Information

Storage

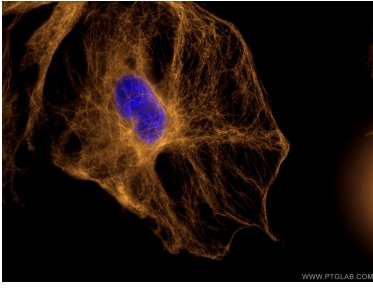
Storage:
Store at -20°C. Avoid exposure to light.
Storage Buffer:
PBS with 50% Glycerol, 0.05% Proclin300, 0.5% BSA, pH 7.3.
Aliquoting is unnecessary for -20°C storage

*** 20ul sizes contain 0.1% BSA

For technical support and original validation data for this product please contact:
T: 1 (888) 4PTGLAB (1-888-478-4522) (toll free in USA), or 1(312) 455-8498 (outside USA) E: proteintech@ptglab.com
W: ptglab.com

This product is exclusively available under Proteintech Group brand and is not available to purchase from any other manufacturer.

Selected Validation Data



Immunofluorescent analysis of (4% PFA) fixed C2C12 cells using CoraLite®555 Beta Tubulin antibody (CL555-80713, Clone: 2O13) at dilution of 1:400.