

For Research Use Only



CoraLite® Plus 555-conjugated Alpha Tubulin Recombinant monoclonal antibody

Catalog Number:CL555-80762

Featured Product

Basic Information

Catalog Number: CL555-80762	GenBank Accession Number: BC009314	Purification Method: Protein A purification
Size: 100ul , Concentration: 1000 ug/ml by Nanodrop;	GeneID (NCBI): 10376	CloneNo.: 1G7
Source: Rabbit	UNIPROT ID: P68363	Recommended Dilutions: IF/ICC: 1:50-1:500
Isotype: IgG	Full Name: tubulin, alpha 1b	Excitation/Emission maxima wavelengths: 554 nm / 570 nm
Immunogen Catalog Number: AG18034	Calculated MW: 50 kDa	
	Observed MW: 50-55 kDa	

Applications

Tested Applications: IF/ICC	Positive Controls: IF/ICC : HeLa cells,
Species Specificity: human, mouse, rat	

Background Information

There are five tubulins in human cells: alpha, beta, gamma, delta, and epsilon. Tubulins are conserved across species. They form heterodimers, which multimerize to form a microtubule filament. An alpha and beta tubulin heterodimer is the basic structural unit of microtubules. The heterodimer does not come apart once formed. The alpha and beta tubulins, which are each about 55 kDa MW, are homologous but not identical. Alpha tubulin is useful for scientists across fields as an internal control due to its high, ubiquitous expression pattern.

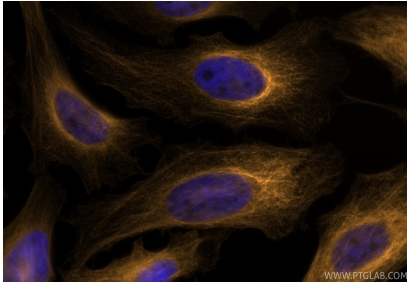
Storage

Storage:
Store at -20°C. Avoid exposure to light. Stable for one year after shipment.
Storage Buffer:
PBS with 50% glycerol, 0.05% Proclin300, 0.5% BSA, pH7.3
Aliquoting is unnecessary for -20°C storage

For technical support and original validation data for this product please contact:
T: 1 (888) 4PTGLAB (1-888-478-4522) (toll free in USA), or 1(312) 455-8498 (outside USA)
E: proteintech@ptglab.com
W: ptglab.com

This product is exclusively available under Proteintech Group brand and is not available to purchase from any other manufacturer.

Selected Validation Data



Immunofluorescent analysis of (4% PFA) fixed HeLa cells using CoraLite® Plus 555 Alpha Tubulin antibody (CL555-80762, Clone: 1G7) at dilution of 1:200.