

For Research Use Only

CoraLite® Plus 555 Mouse IgG2a, κ Isotype Control Recombinant Antibody

Catalog Number:CL555-98599



Basic Information

Catalog Number:

CL555-98599

Size:

100ug , 500 ug/ml

Source:

Mouse

Isotype:

IgG2a

GenBank Accession Number:

GeneID (NCBI):

Full Name:

Purification Method:

Protein A purification

CloneNo.:

252252A1

Recommended Dilutions:

FC: 0.25 ug per 10⁶ cells in a 100 µl suspension

Excitation/Emission maxima wavelengths:

554 nm / 570 nm

Applications

Tested Applications:

FC

Species Specificity:

n/a

Positive Controls:

FC : THP-1 cells, rat splenocytes cells

Background Information

This product is an isotype control antibody, which is used to estimate the non-specific binding of target primary antibodies due to Fc receptor binding or other protein-protein interactions. An isotype control antibody should have the same immunoglobulin type and be used at the same concentration as the test antibody.

Storage

Storage:

Store at 2-8°C. Avoid exposure to light. Stable for one year after shipment.

Storage Buffer:

PBS with 0.09% sodium azide, pH7.3

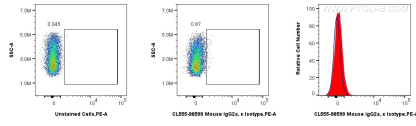
For technical support and original validation data for this product please contact:

T: 1 (888) 4PTGLAB (1-888-478-4522) (toll free in USA), or 1(312) 455-8498 (outside USA)

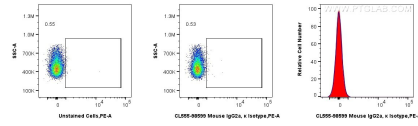
E: proteintech@ptglab.com
W: ptglab.com

This product is exclusively available under Proteintech Group brand and is not available to purchase from any other manufacturer.

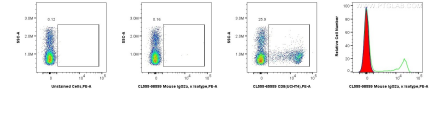
Selected Validation Data



1x10⁶ THP-1 cells were surface stained with 0.25 ug CoraLite® Plus 555 Mouse IgG2a, κ Isotype Control RecAb (CL555-98599, Clone:252252A1) (red in histogram) or unstained (blue in histogram). Cells were incubated with FC Receptor Block prior to staining. Cells were not fixed.



1x10⁶ rat splenocytes were surface stained with 0.25 ug CoraLite® Plus 555 Mouse IgG2a, κ Isotype Control RecAb (CL555-98599, Clone:252252A1) (red in histogram) or unstained (blue in histogram). Cells were incubated with FC Receptor Block prior to staining. Cells were not fixed.



1x10⁶ human PBMCs were surface stained with 0.25 ug CoraLite® Plus 555 Mouse IgG2a, κ Isotype Control RecAb (CL555-98599, Clone:252252A1) (red in histogram) or unstained (blue in histogram) or 0.25 ug CoraLite® 555 Anti-Human CD8 (UCHT4) Mouse IgG2a Recombinant Antibody (CL555-65559, Clone: UCHT4) (green in histogram). Cells were incubated with FC Receptor Block prior to staining. Cells were not fixed.