

For Research Use Only

FcZero-rAb® CoraLite® Plus 555 Anti-Human HLA-DR (L243) Rabbit Recombinant Antibody



Catalog Number: CL555-FcA65560

Basic Information

Catalog Number:

CL555-FcA65560

Size:

100 tests, 5 ul/test

Source:

Rabbit

Isotype:

IgG

GenBank Accession Number:

BC032350

GeneID (NCBI):

3122

ENSEMBL Gene ID:

ENSG00000204287

UNIPROT ID:

P01903

Full Name:

major histocompatibility complex, class II, DR alpha

Calculated MW:

254 aa, 29 kDa

Purification Method:

Protein A purification

CloneNo.:

L243

Recommended Dilutions:

FC: 5 ul per 10⁶ cells in a 100 µl suspension

Excitation/Emission maximum wavelengths:

554 nm / 570 nm

Applications

Tested Applications:

FC

Species Specificity:

human, monkey, non-human primates

Positive Controls:

FC : human PBMCs,

Background Information

HLA-DR is a member of MHC class II molecules encoded by the human leukocyte antigen complex on the region 6p21.31 of chromosome 6. HLA-DR is composed of two non-covalently associated transmembrane glycoproteins (the α and β chains), and is primarily expressed on B lymphocytes, monocytes, dendritic cells and thymic epithelial cells (PMID: 33125816). HLA-DR participates in the antigen presentation to CD4⁺ or CD8⁺ T cells and is postulated as a general biomarker of sepsis-induced immunosuppression (PMID: 28199206, 32421903).

Storage

Storage:

Store at 2-8°C. Avoid exposure to light. Stable for one year after shipment.

Storage Buffer:

PBS with 0.09% sodium azide and 0.5% BSA, pH7.3

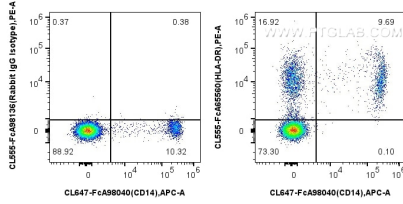
For technical support and original validation data for this product please contact:

T: 1 (888) 4PTGLAB (1-888-478-4522) (toll free in USA), or 1(312) 455-8498 (outside USA)

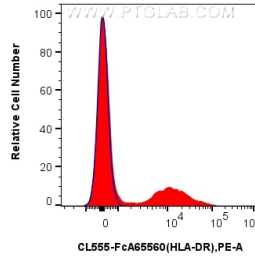
E: proteintech@ptglab.com
W: ptglab.com

This product is exclusively available under Proteintech Group brand and is not available to purchase from any other manufacturer.

Selected Validation Data



1x10⁶ human PBMCs were surface stained with FcZero-rAb® CoraLite® Plus 647 Anti-Human CD14, and 5 ul CoraLite® Plus 555 Anti-Human HLA-DR (L243) Rabbit RecAb (CL555-FcA65560, Clone: L243) or FcZero-rAb® CoraLite® Plus 555 Rabbit IgG Isotype Control Recombinant Antibody (CL555-FcA98136, Clone: 240953C9). Cells were not fixed.



1x10⁶ human PBMCs were surface stained with 5 ul CoraLite® Plus 555 Anti-Human HLA-DR (L243) Rabbit RecAb (CL555-FcA65560, Clone: L243) (red) or FcZero-rAb® CoraLite® Plus 555 Rabbit IgG Isotype Control Recombinant Antibody (CL555-FcA98136, Clone: 240953C9) (blue). Cells were not fixed.