

For Research Use Only

# FcZero-rAb® CoraLite®555 Anti-Human CD8 (SK1) Rabbit Recombinant Antibody

Catalog Number:CL555-FcA65630



## Basic Information

Catalog Number:

CL555-FcA65630

Size:

100tests , 5 ul/test

Source:

Rabbit

Isotype:

IgG

GenBank Accession Number:

BC025715

GeneID (NCBI):

925

ENSEMBL Gene ID:

ENSG00000153563

UNIPROT ID:

P01732

Full Name:

CD8a molecule

Calculated MW:

235 aa, 26 kDa

Purification Method:

Protein A purification

CloneNo.:

SK1

Recommended Dilutions:

FC: 5 ul per 10<sup>6</sup> cells in a 100 µl suspension

Excitation/Emission maxima wavelengths:

557 nm / 570 nm

## Applications

Tested Applications:

FC

Species Specificity:

human, monkey, non-human primates

Positive Controls:

FC : human PBMCs,

## Background Information

CD8 is a transmembrane glycoprotein composed of two disulfide-linked chains. It can be present as a homodimer of CD8 $\alpha$  or as a heterodimer of CD8 $\alpha$  and CD8 $\beta$  (PMID: 3264320; 8253791). CD8 is found on most thymocytes. The majority of class I-restricted T cells express mostly the CD8 $\alpha\beta$  heterodimer while CD8 $\alpha\alpha$  homodimers alone have been found on some gut intraepithelial T cells, on some T cell receptor (TCR)  $\gamma\delta$  T cells and on NK cells (PMID: 2111591; 1831127; 8420975). CD8 acts as a co-receptor that binds to MHC class-I and participates in cytotoxic T cell activation (PMID: 8499079). During T cell development, CD8 is required for positive selection of CD4<sup>-</sup>/CD8<sup>+</sup> T cells (PMID: 1968084).

## Storage

Storage:

Store at 2-8°C. Avoid exposure to light. Stable for one year after shipment.

Storage Buffer:

PBS with 0.09% sodium azide and 0.5% BSA, pH7.3

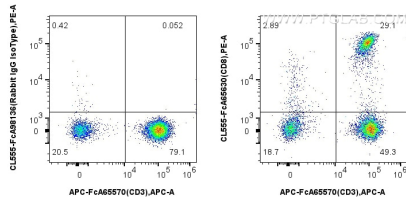
For technical support and original validation data for this product please contact:

T: 1 (888) 4PTGLAB (1-888-478-4522) (toll free in USA), or 1(312) 455-8498 (outside USA)

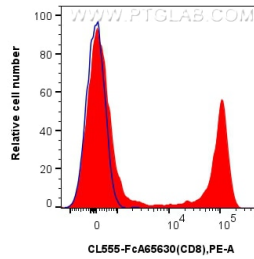
E: proteintech@ptglab.com  
W: ptglab.com

This product is exclusively available under Proteintech Group brand and is not available to purchase from any other manufacturer.

## Selected Validation Data



1x10<sup>6</sup> human PBMCs were surface stained with APC Anti-Human CD3 (UCHT1) and 5 ul CoraLite®555 Anti-Human CD8 (SK1) Rabbit RecAb (CL555-FcA65630, Clone:SK1), or 5 ul Rabbit IgG Isotype Control RecAb (CL555-FcA98136, Clone: 240953C9). Cells were not fixed. Lymphocytes were gated.



1x10<sup>6</sup> human PBMCs were surface stained with 5 ul CoraLite®555 Anti-Human CD8 (SK1) Rabbit RecAb (CL555-FcA65630, Clone:SK1) (red), or 5 ul Rabbit IgG Isotype Control RecAb (CL555-FcA98136, Clone: 240953C9) (blue). Cells were not fixed. Lymphocytes were gated.