

For Research Use Only

# CoraLite®568 Anti-Mouse CD107b (ABL-93)



Catalog Number: **CL568-65052**

## Basic Information

<b>Catalog Number:</b> CL568-65052	<b>GenBank Accession Number:</b> BC138718	<b>Purification Method:</b> N/A
<b>Size:</b> 100tests , 5 µl/test	<b>GeneID (NCBI):</b> 16784	<b>CloneNo.:</b> ABL-93
<b>Source:</b> Rat	<b>Full Name:</b> lysosomal-associated membrane protein 2	<b>Recommended Dilutions:</b> IF 1:50-1:500
<b>Isotype:</b> IgG2a		<b>Excitation/Emission maxima wavelengths:</b> 593 nm/614 nm

## Applications

<b>Tested Applications:</b> FC (Intra), IF	<b>Positive Controls:</b> IF : NIH/3T3 cells,
<b>Species Specificity:</b> Mouse	

## Background Information

LAMP2 (CD107b) is a Lysosomal membrane glycoprotein. LAMP2 is extensively glycosylated with asparagine-linked oligosaccharides which protect it from intracellular proteolysis (PMID: 10521503). Although LAMP-2 is localized primarily in the endosome-lysosomal membrane of cells, it is also found on the plasma membrane under certain circumstances, e.g., after platelet activation, during granulocytic differentiation and activation, and in some tumor cells (PMID: 12221139). LAMP is involved in lysosomal stability and autophagy (PMID: 12221139). This glycoprotein provides selectins with carbohydrate ligands. LAMP2 may plays a role in tumor cell metastasis (PMID 9426697).

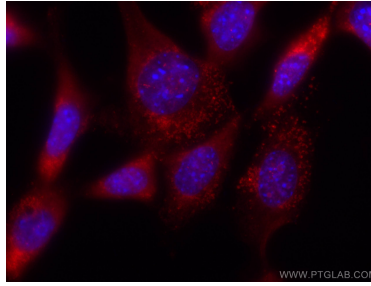
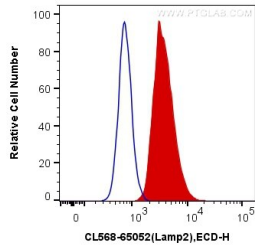
## Storage

**Storage:**  
Store at 2-8°C. Avoid exposure to light.  
**Storage Buffer:**  
PBS with 0.1% sodium azide and 0.5% BSA, pH 7.3.

For technical support and original validation data for this product please contact:  
T: 1 (888) 4PTGLAB (1-888-478-4522) (toll free in USA), or 1(312) 455-8498 (outside USA)      E: proteintech@ptglab.com  
W: ptglab.com

**This product is exclusively available under Proteintech Group brand and is not available to purchase from any other manufacturer.**

## Selected Validation Data



1X10<sup>6</sup> NIH/3T3 cells were intracellularly stained with 5 ul CoraLite®568 Anti-Mouse CD107b (CL568-65052, Clone: ABL-93) (red), or Control Antibody (blue). Cells were fixed with 4% PFA and permeabilized with 0.1% TritonX-100.

Immunofluorescent analysis of (-20°C Ethanol) fixed NIH/3T3 cells using CoraLite®568 CD107b antibody (CL568-65052, Clone: ABL-93) at dilution of 1:100.