

For Research Use Only

CoraLite®568 Anti-Mouse CD3 (17A2)



Catalog Number: **CL568-65077**

Basic Information

| | | |
|---------------------------------------|---|---|
| Catalog Number: CL568-65077 | GenBank Accession Number: BC098236 | Purification Method: Affinity purification |
| Size: 100tests , 5 µl/test | GeneID (NCBI): 12501 | CloneNo.: 17A2 |
| Source: Rat | Full Name: CD3 antigen, epsilon polypeptide | Excitation/Emission maxima wavelengths: 562 nm / 583 nm |
| Isotype: IgG2b, kappa | | |

Applications

Tested Applications:
FC

Species Specificity:
Mouse

Background Information

CD3 is a multimeric protein associated with the T-cell receptor (TCR) to form a complex involved in antigen recognition and signal transduction (PMID: 15885124). CD3 is composed of CD3γ, δ, ε, and ζ chains (PMID: 1826255). It is expressed by thymocytes in a developmentally regulated manner, T cells, and some NK cells (PMID: 3289580). The TCR recognizes antigens bound to major histocompatibility complex (MHC) molecules. TCR-mediated peptide-MHC recognition is transmitted to the CD3 complex, leading to the intracellular signal transduction (PMID: 11985657).

Storage

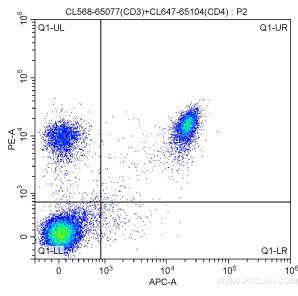
Storage:
Store at 2-8°C. Avoid exposure to light. Stable for one year after shipment.

Storage Buffer:
PBS with 0.1% sodium azide and 0.5% BSA, pH 7.3.

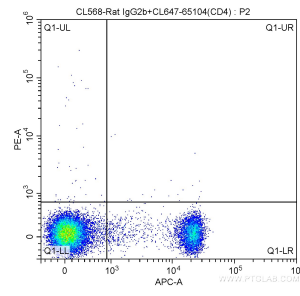
For technical support and original validation data for this product please contact:
T: 1 (888) 4PTGLAB (1-888-478-4522) (toll free in USA), or 1(312) 455-8498 (outside USA) E: proteintech@ptglab.com
W: ptglab.com

This product is exclusively available under Proteintech Group brand and is not available to purchase from any other manufacturer.

Selected Validation Data



1X10⁶ mouse splenocytes were surface stained with 5 ul CoraLite® Plus 647 Anti-Mouse CD4 (CL647-65104, Clone: GK1.5) and 5 ul CoraLite® 568 Anti-Mouse CD3 (CL568-65077, Clone:17A2). Cells were not fixed.



1X10⁶ mouse splenocytes were surface stained with 5 ul CoraLite® Plus 647 Anti-Mouse CD4 (CL647-65104, Clone: GK1.5) and CoraLite® 568-Rat IgG2b isotype control. Cells were not fixed.