

For Research Use Only

CoraLite®568-conjugated Cytokeratin 18 Monoclonal antibody



Catalog Number:CL568-66187

Basic Information

Catalog Number: CL568-66187	GenBank Accession Number: BC000180	Purification Method: Protein A purification
Size: 100ul , Concentration: 1000 µg/ml by Nanodrop;	GeneID (NCBI): 3875	CloneNo.: 1G11C4
Source: Mouse	Full Name: keratin 18	Recommended Dilutions: IF 1:400-1:1600
Isotype: IgG1	Calculated MW: 48 kDa	Excitation/Emission maxima wavelengths: 562 nm / 583 nm
Immunogen Catalog Number: AG1260		

Applications

Tested Applications: IF	Positive Controls: IF : HUVEC cells,
Species Specificity: human	

Background Information

Keratins are a large family of proteins that form the intermediate filament cytoskeleton of epithelial cells, which are classified into two major sequence types. Type I keratins are a group of acidic intermediate filament proteins, including K9-K23, and the hair keratins Ha1-Ha8. Type II keratins are the basic or neutral counterparts to the acidic type I keratins, including K1-K8, and the hair keratins, Hb1-Hb6. KRT18, also named as CYK18, PIG46 and K18, is the most commonly found members of the intermediate filament gene family. KRT18 is a type I keratin which is found primarily in non squamous epithelia and is present in a majority of adenocarcinomas and ductal carcinomas but not in squamous cell carcinomas.

Storage

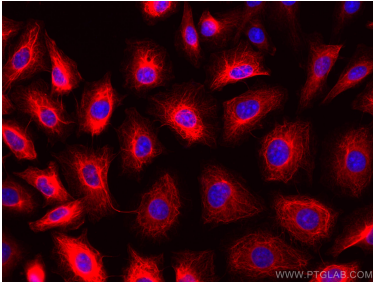
Storage:
Store at -20°C. Avoid exposure to light. Stable for one year after shipment.
Storage Buffer:
PBS with 50% Glycerol, 0.05% Proclin300, 0.5% BSA, pH 7.3.
Aliquoting is unnecessary for -20°C storage

*** 20ul sizes contain 0.1% BSA

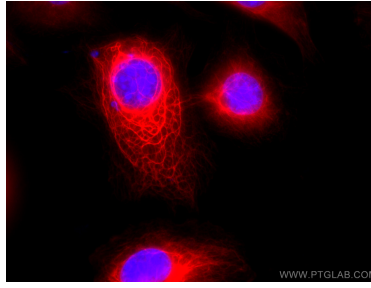
For technical support and original validation data for this product please contact:
T: 1 (888) 4PTGLAB (1-888-478-4522) (toll free in USA), or 1(312) 455-8498 (outside USA) E: proteintech@ptglab.com W: ptglab.com

This product is exclusively available under Proteintech Group brand and is not available to purchase from any other manufacturer.

Selected Validation Data



Immunofluorescent analysis of (-20°C Methanol) fixed HUVEC cells using CoraLite@568 Cytokeratin 18 antibody (CL568-66187, Clone: 1G11C4) at dilution of 1:800.



Immunofluorescent analysis of (-20°C Methanol) fixed HUVEC cells using CoraLite@568 Cytokeratin 18 antibody (CL568-66187, Clone: 1G11C4) at dilution of 1:100.