

For Research Use Only

CoraLite®594-conjugated Beta Tubulin Polyclonal antibody



Catalog Number:CL594-10068

Basic Information

Catalog Number: CL594-10068	GenBank Accession Number: BC000748	Purification Method: Antigen affinity purification
Size: 100ul , Concentration: 1000 µg/ml by Nanodrop;	GeneID (NCBI): 10381	Recommended Dilutions: IF 1:50-1:500
Source: Rabbit	Full Name: tubulin, beta 3	Excitation/Emission maxima wavelengths: 594 nm / 615 nm
Isotype: IgG	Calculated MW: 450 aa, 50 kDa	
Immunogen Catalog Number: AG0117	Observed MW: 50-55 kDa	

Applications

Tested Applications: FC, IF	Positive Controls: IF : HeLa cells,
Species Specificity: human, mouse, rat	

Background Information

There are five tubulins in human cells: alpha, beta, gamma, delta, and epsilon. Tubulins are conserved across species. They form heterodimers, which multimerize to form a microtubule filament. An alpha and beta tubulin heterodimer is the basic structural unit of microtubules. The heterodimer does not come apart, once formed. The alpha and beta tubulins, which are each about 55 kDa MW, are homologous but not identical. Alpha, beta, and gamma tubulins have all been used as loading controls. Tubulin expression may vary according to resistance to antimicrobial and antimetabolic drugs.

Storage

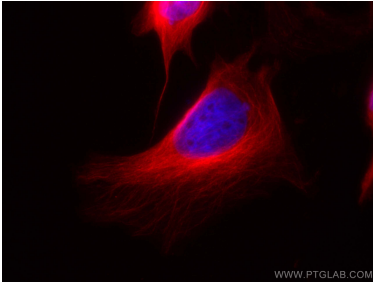
Storage:
Store at -20°C. Avoid exposure to light. Stable for one year after shipment.
Storage Buffer:
PBS with 50% Glycerol, 0.05% Proclin300, 0.5% BSA, pH 7.3.
Aliquoting is unnecessary for -20°C storage

*** 20ul sizes contain 0.1% BSA

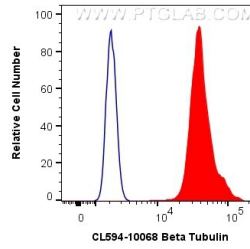
For technical support and original validation data for this product please contact:
T: 1 (888) 4PTGLAB (1-888-478-4522) (toll free in USA), or 1(312) 455-8498 (outside USA)
E: proteintech@ptglab.com
W: ptglab.com

This product is exclusively available under Proteintech Group brand and is not available to purchase from any other manufacturer.

Selected Validation Data



Immunofluorescent analysis of (4% PFA) fixed HeLa cells using CoraLite®594 Beta Tubulin antibody (CL594-10068) at dilution of 1:200.



1X10⁶ HeLa cells were intracellularly stained with 0.4 ug CoraLite®594 Anti-Human Beta Tubulin (CL594-10068) (red), or 0.4 ug Control Antibody. Cells were fixed with 4% PFA and permeabilized with Flow Cytometry Perm Buffer (PF00011-C).