

For Research Use Only

CoraLite®594-conjugated Mouse-IgG Polyclonal antibody

Catalog Number:CL594-10283



Basic Information

Catalog Number:

CL594-10283

GenBank Accession Number:

GeneID (NCBI):

Size:

100ul , Concentration: 1000 ug/ml by
Nanodrop;

Full Name:

Calculated MW:

155 kDa

Source:

Rabbit

Observed MW:

25 kDa, 50-55 kDa

Isotype:

IgG

Purification Method:

Antigen affinity purification

Recommended Dilutions:

IF/ICC 1:50-1:500

Excitation/Emission maxima
wavelengths:

588 nm / 604 nm

Applications

Tested Applications:

IF/ICC

Positive Controls:

IF/ICC : HeLa cells,

Species Specificity:

mouse

Background Information

This antibody detects all the heavy and light chains of total mouse IgG.

Storage

Storage:

Store at -20°C. Avoid exposure to light. Stable for one year after shipment.

Storage Buffer:

PBS with 50% Glycerol, 0.05% Proclin300, 0.5% BSA, pH 7.3.

Aliquoting is unnecessary for -20°C storage

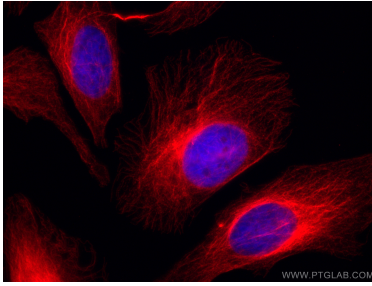
For technical support and original validation data for this product please contact:

T: 1 (888) 4PTGLAB (1-888-478-4522) (toll free
in USA), or 1(312) 455-8498 (outside USA)

E: proteintech@ptglab.com
W: ptglab.com

This product is exclusively available under Proteintech
Group brand and is not available to purchase from any
other manufacturer.

Selected Validation Data



Immunofluorescent analysis of (4% PFA) fixed HeLa cells using 66031-1-Ig (alpha tubulin antibody) and CL594-10283 (CL594-Rabbit anti-Mouse IgG as secondary antibody at dilution of 1:200.