

For Research Use Only

CoraLite®594-conjugated Syntaxin 6 Polyclonal antibody



Catalog Number: CL594-10841

Featured Product

Basic Information

Catalog Number: CL594-10841	GenBank Accession Number: BC009944	Purification Method: Antigen affinity purification
Size: 100ul , Concentration: 1000 µg/ml by Nanodrop;	GeneID (NCBI): 10228	Recommended Dilutions: IF 1:50-1:500
Source: Rabbit	Full Name: syntaxin 6	Excitation/Emission maxima wavelengths: 593 nm / 614 nm
Isotype: IgG	Calculated MW: 29 kDa	
Immunogen Catalog Number: AG1284	Observed MW: 32 kDa	

Applications

Tested Applications: FC (Intra), IF	Positive Controls: IF : PC-12 cells,
Species Specificity: human, mouse, rat	

Background Information

Syntaxin-6 (STX6) is a SNARE protein located in the trans-Golgi network (TGN) and endosomes. It associates with a variety of SNARE proteins and is involved in intracellular vesicle trafficking. STX6 is required for sorting proteins from endosomes toward either the TGN or lysosomes.

Storage

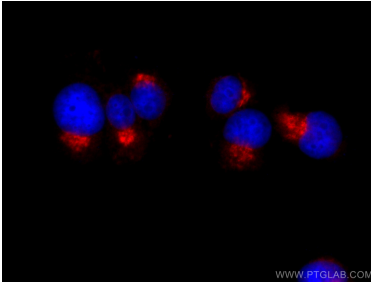
Storage:
Store at -20°C. Avoid exposure to light.
Storage Buffer:
PBS with 50% Glycerol, 0.05% Proclin300, 0.5% BSA, pH 7.3.
Aliquoting is unnecessary for -20°C storage

*** 20ul sizes contain 0.1% BSA

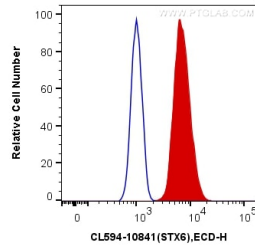
For technical support and original validation data for this product please contact:
T: 1 (888) 4PTGLAB (1-888-478-4522) (toll free in USA), or 1(312) 455-8498 (outside USA) E: proteintech@ptglab.com W: ptglab.com

This product is exclusively available under Proteintech Group brand and is not available to purchase from any other manufacturer.

Selected Validation Data



Immunofluorescent analysis of (4% PFA) fixed PC-12 cells using Coralite@594 Syntaxin 6 antibody (CL594-10841) at dilution of 1:100.



1×10^6 PC-12 cells were intracellularly stained with 0.4 μ g Coralite@594 Anti-Human Syntaxin 6 (CL594-10841) (red), or 0.4 μ g Control Antibody. Cells were fixed with 4% PFA and permeabilized with Flow Cytometry Perm Buffer (PF00011-C).