

For Research Use Only

CoraLite®594-conjugated IBA1 Polyclonal antibody

Catalog Number:CL594-10904

Featured Product

2 Publications



Basic Information

Catalog Number:

CL594-10904

Size:

100ul , Concentration: 1000 ug/ml by
Nanodrop;

Source:

Rabbit

Isotype:

IgG

Immunogen Catalog Number:

AG1363

GenBank Accession Number:

BC009474

GeneID (NCBI):

199

ENSEMBL Gene ID:

ENSG00000204472

UNIPROT ID:

P55008

Full Name:

allograft inflammatory factor 1

Calculated MW:

17 kDa

Purification Method:

Antigen affinity purification

Recommended Dilutions:

IF-P 1:50-1:500

IF/ICC 1:50-1:500

Excitation/Emission maxima
wavelengths:

588 nm / 604 nm

Applications

Tested Applications:

IF/ICC, IF-P

Cited Applications:

IF

Species Specificity:

human, mouse, rat

Cited Species:

mouse, rat

Positive Controls:

IF-P : rat brain tissue,

IF/ICC : BV-2 cells,

Background Information

IBA1 is a 143 amino acid cytoplasmic, inflammation response scaffold protein. It is constitutively expressed in monocytes and macrophages and is known to be involved in macrophage activation. It is a marker of activated macrophage. Expression of IBA1 is up-regulated in activated microglia following facial nerve axotomy, ischemia, and several brain diseases, thereby implicating it in the activated phenotypes of microglia.

Notable Publications

Author	Pubmed ID	Journal	Application
Lele Deng	35665659	Mol Immunol	IF
Beibei Liu	39415414	Mol Pain	IF

Storage

Storage:

Store at -20°C. Avoid exposure to light. Stable for one year after shipment.

Storage Buffer:

PBS with 50% Glycerol, 0.05% Proclin300, 0.5% BSA, pH 7.3.

Aliquoting is unnecessary for -20°C storage

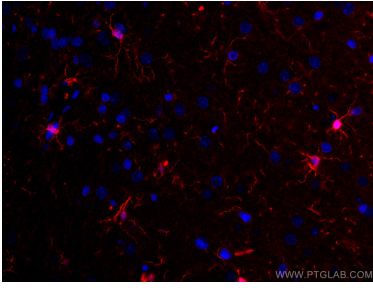
For technical support and original validation data for this product please contact:

T: 1 (888) 4PTGLAB (1-888-478-4522) (toll free
in USA), or 1(312) 455-8498 (outside USA)

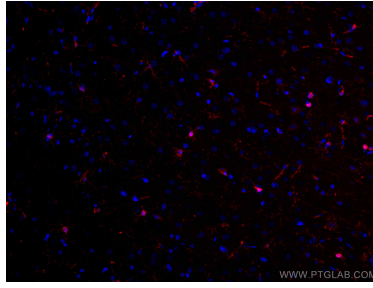
E: proteintech@ptglab.com
W: ptglab.com

This product is exclusively available under Proteintech Group brand and is not available to purchase from any other manufacturer.

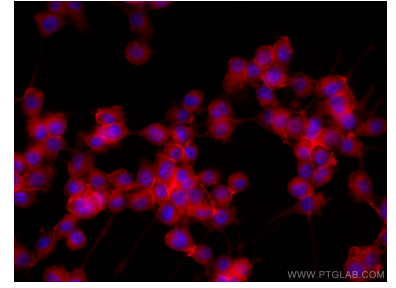
Selected Validation Data



Immunofluorescent analysis of (4% PFA) fixed rat brain tissue using CoraLite®594 IBA1 antibody (CL594-10904) at dilution of 1:200.



Immunofluorescent analysis of (4% PFA) fixed rat brain tissue using CoraLite®594 IBA1 antibody (CL594-10904) at dilution of 1:200.



Immunofluorescent analysis of (-20°C Ethanol) fixed BV-2 cells using CoraLite®594 IBA1 antibody (CL594-10904) at dilution of 1:200.