

For Research Use Only

# CoraLite®594-conjugated Myosin Light Chain 2/MLC-2V Polyclonal antibody

Catalog Number: CL594-10906



## Basic Information

### Catalog Number:

CL594-10906

### Size:

100ul , Concentration: 1000 ug/ml by Nanodrop;

### Source:

Rabbit

### Isotype:

IgG

### Immunogen Catalog Number:

AG1356

### GenBank Accession Number:

BC015821

### GeneID (NCBI):

4633

### UNIPROT ID:

P10916

### Full Name:

myosin, light chain 2, regulatory, cardiac, slow

### Calculated MW:

19 kDa

### Observed MW:

19 kDa

### Purification Method:

Antigen affinity purification

### Recommended Dilutions:

IF-P 1:50-1:500

### Excitation/Emission maxima wavelengths:

588 nm / 604 nm

## Applications

### Tested Applications:

IF-P

### Species Specificity:

human, mouse, rat, zebrafish

### Positive Controls:

IF-P : mouse heart tissue,

## Background Information

MYL2, also named as MLC-2v and MLC-2, is ventricular/cardiac muscle isoform. Defects in MYL2 are the cause of cardiomyopathy familial hypertrophic type 10 (CMH10). Defects in MYL2 are the cause of cardiomyopathy familial hypertrophic with mid-left ventricular chamber type 2 (MVC2). MYL2 has been widely used as a marker of mature ventricular cardiomyocytes. There are four genes of myosin light chain 2 (MLC2): MYL2 (MLC2v), MYL5, MYL7 (MLC2a) and MYL9 (MLC2c). While usually myosin light chain 2 is referred to MYL2.

## Storage

### Storage:

Store at -20°C. Avoid exposure to light. Stable for one year after shipment.

### Storage Buffer:

PBS with 50% Glycerol, 0.05% Proclin300, 0.5% BSA, pH 7.3.

Aliquoting is unnecessary for -20°C storage

For technical support and original validation data for this product please contact:

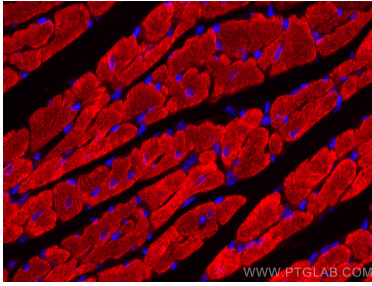
T: 1 (888) 4PTGLAB (1-888-478-4522) (toll free in USA), or 1(312) 455-8498 (outside USA)

E: [proteintech@ptglab.com](mailto:proteintech@ptglab.com)  
W: [ptglab.com](http://ptglab.com)

This product is exclusively available under Proteintech Group brand and is not available to purchase from any other manufacturer.

---

## Selected Validation Data



Immunofluorescent analysis of (4% PFA) fixed mouse heart tissue using CoraLite® 594 Myosin Light Chain 2/MLC-2V antibody (CL594-10906) at dilution of 1:200.