

For Research Use Only

# CoraLite®594-conjugated FIS1 Polyclonal antibody

Catalog Number: CL594-10956

Featured Product



## Basic Information

### Catalog Number:

CL594-10956

### Size:

100ul , Concentration: 1000 ug/ml by Nanodrop;

### Source:

Rabbit

### Isotype:

IgG1

### Immunogen Catalog Number:

AG1409

### GenBank Accession Number:

BC009428

### GeneID (NCBI):

51024

### UNIPROT ID:

Q9Y3D6

### Full Name:

fission 1 (mitochondrial outer membrane) homolog (S. cerevisiae)

### Calculated MW:

17 kDa

### Observed MW:

17 kDa

### Purification Method:

Antigen affinity purification

### Recommended Dilutions:

IF/ICC 1:50-1:500

### Excitation/Emission maxima wavelengths:

588 nm / 604 nm

## Applications

### Tested Applications:

IF/ICC

### Species Specificity:

human, mouse, rat, pig

### Positive Controls:

IF/ICC : HepG2 cells,

## Background Information

Fis1 (fission 1) is an integral mitochondrial outer membrane protein that participates in mitochondrial fission by interacting with dynamin-related protein 1 (Drp1). Excessive mitochondrial fission is associated with the pathology of a number of neurodegenerative or neurodevelopmental diseases. Increased expression of Fis1 has been found in Huntington's disease (HD)-affected brain, Alzheimer's disease (AD) patients, and autism spectrum disorder. This antibody was raised against the full-length of human Fis1 protein, and recognizes endogenous Fis1 protein in various lysates. (PMID: 21257639, 21459773, 23333625)

## Storage

### Storage:

Store at -20°C. Avoid exposure to light. Stable for one year after shipment.

### Storage Buffer:

PBS with 50% Glycerol, 0.05% Proclin300, 0.5% BSA, pH 7.3.

Aliquoting is unnecessary for -20°C storage

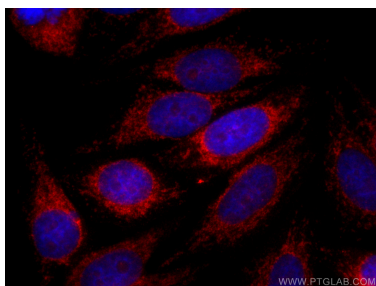
For technical support and original validation data for this product please contact:

T: 1 (888) 4PTGLAB (1-888-478-4522) (toll free in USA), or 1(312) 455-8498 (outside USA)

E: [proteintech@ptglab.com](mailto:proteintech@ptglab.com)  
W: [ptglab.com](http://ptglab.com)

This product is exclusively available under Proteintech Group brand and is not available to purchase from any other manufacturer.

## Selected Validation Data



Immunofluorescent analysis of (4% PFA) fixed HepG2 cells using Coralite®594 F1S1 antibody (CL594-10956) at dilution of 1:200.