

For Research Use Only

# CoraLite®594-conjugated CD31 Polyclonal antibody



Catalog Number: CL594-11265

Featured Product

1 Publications

## Basic Information

<b>Catalog Number:</b> CL594-11265	<b>GenBank Accession Number:</b> BC022512	<b>Purification Method:</b> Antigen affinity purification
<b>Size:</b> 100ul , Concentration: 1000 µg/ml by Nanodrop;	<b>GeneID (NCBI):</b> 5175	<b>Recommended Dilutions:</b> IF 1:50-1:500
<b>Source:</b> Rabbit	<b>Full Name:</b> platelet/endothelial cell adhesion molecule	<b>Excitation/Emission maxima wavelengths:</b> 588 nm / 604 nm
<b>Isotype:</b> IgG	<b>Calculated MW:</b> 83 kDa	
<b>Immunogen Catalog Number:</b> AG1787		

## Applications

<b>Tested Applications:</b> IF	<b>Positive Controls:</b> IF : human breast cancer tissue, human tonsillitis tissue, HUVEC cells
<b>Cited Applications:</b> IF	
<b>Species Specificity:</b> human	
<b>Cited Species:</b> human	

## Background Information

Platelet endothelial cell adhesion molecule-1 (PECAM-1, CD31) is a member of the immunoglobulin gene superfamily of cell adhesion molecules. CD31 is a transmembrane glycoprotein that is highly expressed on the surface of the endothelium, making up a large portion of its intracellular junctions. PECAM-1 is also present on the surface of hematopoietic cells and immune cells including platelets, monocytes, neutrophils, natural killer cells, megakaryocytes and some types of T-cell (PMID: 9011572). As well as its role in cell-cell adhesion, PECAM-1 functions as a signaling receptor, and is involved in important physiological events such as nitric oxide production, regulation of T-cell immunity and tolerance, leukocyte transendothelial migration and inflammation and angiogenesis (PMID: 21183735; 20978210; 17872453; 20634489).

## Notable Publications

Author	Pubmed ID	Journal	Application
Yong-Hong Wang	34256842	Stem Cell Res Ther	IF

## Storage

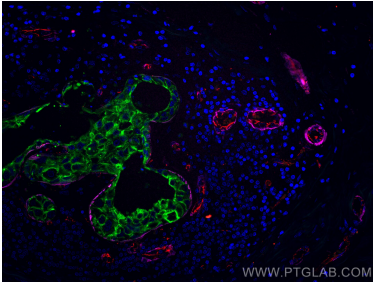
**Storage:**  
Store at -20°C. Avoid exposure to light. Stable for one year after shipment.  
**Storage Buffer:**  
PBS with 50% Glycerol, 0.05% Proclin300, 0.5% BSA, pH 7.3.  
Aliquoting is unnecessary for -20°C storage

\*\*\* 20ul sizes contain 0.1% BSA

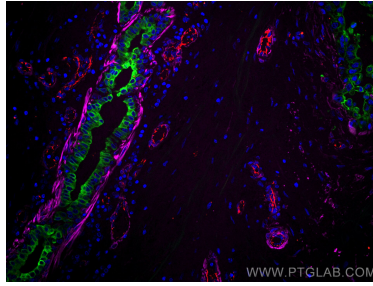
For technical support and original validation data for this product please contact:  
T: 1 (888) 4PTGLAB (1-888-478-4522) (toll free in USA), or 1(312) 455-8498 (outside USA)  
E: proteintech@ptglab.com  
W: ptglab.com

This product is exclusively available under Proteintech Group brand and is not available to purchase from any other manufacturer.

## Selected Validation Data



Immunofluorescent analysis of (4% PFA) fixed human breast cancer tissue using CoraLite® 594 CD31 antibody (CL594-11265) at dilution of 1:200, CoraLite® 488 Cytokeratin 7 antibody (CL488-15539, green), CoraLite® Plus 647 smooth muscle actin specific antibody (CL647-67735, Clone: 1E9A11, magenta).



Immunofluorescent analysis of (4% PFA) fixed human breast cancer tissue using CoraLite® 594 CD31 antibody (CL594-11265) at dilution of 1:200, CoraLite® 488 Cytokeratin 7 antibody (CL488-15539, green), CoraLite® Plus 647 smooth muscle actin specific antibody (CL647-67735, Clone: 1E9A11, magenta).