

For Research Use Only

CoraLite®594-conjugated IgA Heavy Chain Polyclonal antibody



Catalog Number:CL594-11449

Basic Information

Catalog Number: CL594-11449	GenBank Accession Number: BC016369	Purification Method: Antigen affinity purification
Size: 100ul , Concentration: 1000 µg/ml by Nanodrop;	GeneID (NCBI): 3493	Recommended Dilutions: IF 1:50-1:500
Source: Rabbit	Full Name: immunoglobulin heavy constant alpha 1	Excitation/Emission maxima wavelengths: 588 nm / 604 nm
Isotype: IgG	Calculated MW: 496 aa, 53 kDa	
Immunogen Catalog Number: AG2007	Observed MW: 53 kDa	

Applications

Tested Applications: IF	Positive Controls: IF : human tonsillitis tissue,
Species Specificity: human	

Background Information

Ig alpha is the major immunoglobulin class in body secretions. It may serve both to defend against local infection and to prevent access of foreign antigens to the general immunologic system. This antibody recognizes the Chain C region of human Ig alpha-1 (IGHA1).

Storage

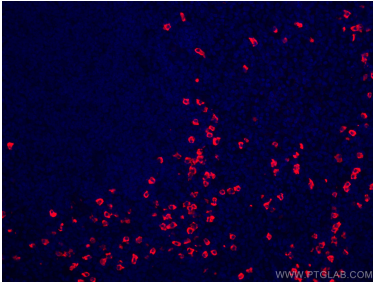
Storage:
Store at -20°C. Avoid exposure to light.
Storage Buffer:
PBS with 50% Glycerol, 0.05% Proclin300, 0.5% BSA, pH 7.3.
Aliquoting is unnecessary for -20°C storage

***** 20ul sizes contain 0.1%BSA**

For technical support and original validation data for this product please contact:
T: 1 (888) 4PTGLAB (1-888-478-4522) (toll free in USA), or 1(312) 455-8498 (outside USA) E: proteintech@ptglab.com W: ptglab.com

This product is exclusively available under Proteintech Group brand and is not available to purchase from any other manufacturer.

Selected Validation Data



Immunofluorescent analysis of (4% PFA) fixed human tonsillitis tissue using CoraLite®594 Human IgA Heavy Chain antibody (CL594-11449) at dilution of 1:200.