

For Research Use Only

# CoraLite®594-conjugated YME1L1 Polyclonal antibody

Catalog Number:CL594-11510

Featured Product



## Basic Information

Catalog Number:

CL594-11510

Size:

100ul , Concentration: 1000 ug/ml by  
Nanodrop;

Source:

Rabbit

Isotype:

IgG

Immunogen Catalog Number:

AG2069

GenBank Accession Number:

BC023507

GeneID (NCBI):

10730

UNIPROT ID:

Q96TA2

Full Name:

YME1-like 1 (*S. cerevisiae*)

Calculated MW:

716 aa, 80 kDa

Observed MW:

86 kDa, 63 kDa

Purification Method:

Antigen affinity purification

Recommended Dilutions:

IF/ICC 1:50-1:500

Excitation/Emission maxima  
wavelengths:

588 nm / 604 nm

## Applications

Tested Applications:

IF/ICC

Species Specificity:

human, mouse, rat

Positive Controls:

IF/ICC : MCF-7 cells,

## Background Information

YME1L1(ATP-dependent zinc metalloprotease) is also named as FTSH1, YME1L,Meg-4,PAMP. YME1L1 plays a phylogenetically conserved role in mitochondrial protein metabolism.It also ensures cell proliferation, maintains normal cristae morphology and complex I respiration activity, promotes antiapoptotic activity and protects mitochondria from the accumulation of oxidatively damaged membrane proteins. YME1L1 can prevent mitochondrial DNA inserting into nuclear. It has 3 isoforms produced by alternative splicing with the molecular weight of 86 kDa, 80 kDa and 76 kDa. This protein can migrate with a molecular weight of about 55-63 kDa, which is the size of the mature YME1L1 protein(PMID:22252130; 22354088).

## Storage

Storage:

Store at -20°C. Avoid exposure to light. Stable for one year after shipment.

Storage Buffer:

PBS with 50% Glycerol, 0.05% Proclin300, 0.5% BSA, pH 7.3.

Aliquoting is unnecessary for -20°C storage

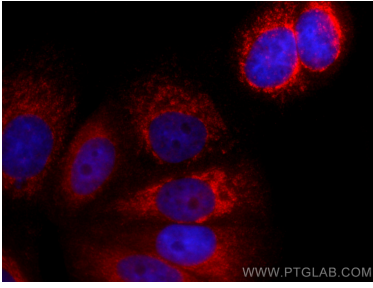
For technical support and original validation data for this product please contact:

T: 1 (888) 4PTGLAB (1-888-478-4522) (toll free  
in USA), or 1(312) 455-8498 (outside USA)

E: [proteintech@ptglab.com](mailto:proteintech@ptglab.com)  
W: [ptglab.com](http://ptglab.com)

**This product is exclusively available under Proteintech Group brand and is not available to purchase from any other manufacturer.**

## Selected Validation Data



Immunofluorescent analysis of (4% PFA) fixed MCF-7 cells using CoraLite@594 YME1L1 antibody (CL594-11510) at dilution of 1:200.