

For Research Use Only

CoraLite®594-conjugated CENPJ Polyclonal antibody

Catalog Number: CL594-11517

Featured Product



Basic Information

Catalog Number:

CL594-11517

Size:

100ul , Concentration: 1000 ug/ml by
Nanodrop;

Source:

Rabbit

Isotype:

IgG

Immunogen Catalog Number:

AG2078

GenBank Accession Number:

BC024209

GeneID (NCBI):

55835

UNIPROT ID:

Q9HC77

Full Name:

centromere protein J

Calculated MW:

1338 aa, 153 kDa

Purification Method:

Antigen affinity purification

Recommended Dilutions:

IF/ICC 1:50-1:500

Excitation/Emission maxima
wavelengths:

588 nm / 604 nm

Applications

Tested Applications:

IF/ICC

Species Specificity:

human, mouse, rat

Positive Controls:

IF/ICC : MDCK cells,

Background Information

CENPJ, also named as CPAP, LAP and LIP1, belongs to the TCP10 family. It plays an important role in cell division and centrosome function by participating in centriole duplication. CENPJ inhibits microtubule nucleation from the centrosome.

Storage

Storage:

Store at -20°C. Avoid exposure to light. Stable for one year after shipment.

Storage Buffer:

PBS with 50% Glycerol, 0.05% Proclin300, 0.5% BSA, pH 7.3.

Aliquoting is unnecessary for -20°C storage

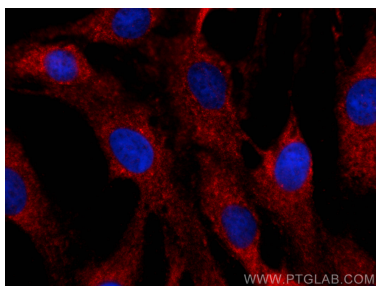
For technical support and original validation data for this product please contact:

T: 1 (888) 4PTGLAB (1-888-478-4522) (toll free
in USA), or 1(312) 455-8498 (outside USA)

E: proteintech@ptglab.com
W: ptglab.com

This product is exclusively available under Proteintech Group brand and is not available to purchase from any other manufacturer.

Selected Validation Data



Immunofluorescent analysis of (-20°C Methanol) fixed MDCK cells using CoraLite® 594 CENPJ antibody (CL594-11517) at dilution of 1:200.