

For Research Use Only

# CoraLite®594-conjugated IgG Lambda Light Chain Polyclonal antibody

Catalog Number:CL594-11541



## Basic Information

Catalog Number:

CL594-11541

Size:

100ul , Concentration: 1000 ug/ml by 3535

Nanodrop;

Source:

Rabbit

Isotype:

IgG

Immunogen Catalog Number:

AG2064

GenBank Accession Number:

BC020233

GeneID (NCBI):

3535

Full Name:

immunoglobulin lambda locus

Calculated MW:

237 aa, 25 kDa

Observed MW:

25 kDa

Purification Method:

Antigen affinity purification

Recommended Dilutions:

IF-P 1:50-1:500

Excitation/Emission maxima wavelengths:

588 nm / 604 nm

## Applications

Tested Applications:

IF-P

Species Specificity:

human

Positive Controls:

IF-P : human tonsillitis tissue,

## Background Information

This antibody detects the lambda light chain of human IgG.

## Storage

Storage:

Store at -20°C. Avoid exposure to light. Stable for one year after shipment.

Storage Buffer:

PBS with 50% Glycerol, 0.05% Proclin300, 0.5% BSA, pH 7.3.

Aliquoting is unnecessary for -20°C storage

For technical support and original validation data for this product please contact:

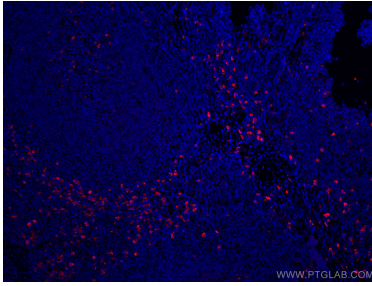
T: 1 (888) 4PTGLAB (1-888-478-4522) (toll free in USA), or 1(312) 455-8498 (outside USA)

E: [proteintech@ptglab.com](mailto:proteintech@ptglab.com)  
W: [ptglab.com](http://ptglab.com)

This product is exclusively available under Proteintech Group brand and is not available to purchase from any other manufacturer.

---

## Selected Validation Data



Immunofluorescent analysis of (4% PFA) fixed human tonsillitis tissue using CoraLite®594 IgG Lambda Light Chain antibody (CL594-11541) at dilution of 1:200.