

For Research Use Only

CoraLite®594-conjugated WFS1 Polyclonal antibody



Catalog Number: CL594-11558

Featured Product

Basic Information

Catalog Number: CL594-11558	GenBank Accession Number: BC030130	Purification Method: Antigen affinity purification
Size: 100ul , Concentration: 1000 µg/ml by Nanodrop;	GeneID (NCBI): 7466	Recommended Dilutions: IF 1:50-1:500
Source: Rabbit	Full Name: Wolfram syndrome 1 (wolframin)	Excitation/Emission maxima wavelengths: 588 nm / 604 nm
Isotype: IgG	Calculated MW: 890 aa, 100 kDa	
Immunogen Catalog Number: AG2114	Observed MW: 100 kDa	

Applications

Tested Applications: IF	Positive Controls: IF : mouse brain tissue,
Species Specificity: human, mouse, rat	

Background Information

Wolfram syndrome protein (WFS1), also called wolframin, is a transmembrane protein, which is located primarily in the endoplasmic reticulum and its expression is induced in response to ER stress, partially through transcriptional activation. ER localization suggests that WFS1 protein has physiological functions in membrane trafficking, secretion, processing and/or regulation of ER calcium homeostasis. It is ubiquitously expressed with highest levels in brain, pancreas, heart, and insulinoma beta-cell lines. Mutations of the WFS1 gene are responsible for two hereditary diseases, autosomal recessive Wolfram syndrome and autosomal dominant low frequency sensorineural hearing loss.

Storage

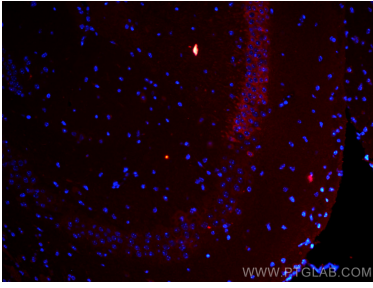
Storage:
Store at -20°C. Avoid exposure to light. Stable for one year after shipment.
Storage Buffer:
PBS with 50% Glycerol, 0.05% Proclin300, 0.5% BSA, pH 7.3.
Aliquoting is unnecessary for -20°C storage

*** 20ul sizes contain 0.1% BSA

For technical support and original validation data for this product please contact:
T: 1 (888) 4PTGLAB (1-888-478-4522) (toll free in USA), or 1(312) 455-8498 (outside USA) E: proteintech@ptglab.com W: ptglab.com

This product is exclusively available under Proteintech Group brand and is not available to purchase from any other manufacturer.

Selected Validation Data



Immunofluorescent analysis of (4% PFA) fixed mouse brain tissue using CoraLite® 594 WFS1 antibody (CL594-11558) at dilution of 1:100.