

For Research Use Only

CoraLite®594-conjugated CSPP1 Polyclonal antibody

Catalog Number:CL594-11931

Featured Product



Basic Information

Catalog Number:

CL594-11931

Size:

100ul , Concentration: 1000 ug/ml by
Nanodrop;

Source:

Rabbit

Isotype:

IgG

Immunogen Catalog Number:

AG2521

GenBank Accession Number:

BC029445

GeneID (NCBI):

79848

UNIPROT ID:

Q1MSJ5

Full Name:

centrosome and spindle pole
associated protein 1

Calculated MW:

141 kDa

Observed MW:

141 kDa

Purification Method:

Antigen affinity purification

Recommended Dilutions:

IF/ICC 1:50-1:500

Excitation/Emission maxima
wavelengths:

588 nm / 604 nm

Applications

Tested Applications:

IF/ICC

Species Specificity:

human, mouse, rat

Positive Controls:

IF/ICC : HeLa cells,

Background Information

CSPP1 interacts with centrosomes and microtubules and plays a role in cell-cycle progression and spindle organization. CSPP1 is required for their common C-terminal domain to interact with Nephrocystin 8 (NPHP8/RPGRIPL1) and to form a ternary complex with NPHP8 and NPHP4, and for ciliogenesis in hTERT-RPE1 cells in vitro and are expressed in ciliated renal, retinal, and respiratory cells in vivo

Storage

Storage:

Store at -20°C. Avoid exposure to light. Stable for one year after shipment.

Storage Buffer:

PBS with 50% Glycerol, 0.05% Proclin300, 0.5% BSA, pH 7.3.

Aliquoting is unnecessary for -20°C storage

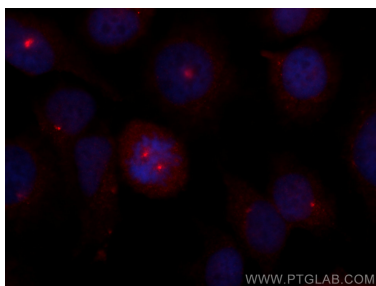
For technical support and original validation data for this product please contact:

T: 1 (888) 4PTGLAB (1-888-478-4522) (toll free
in USA), or 1(312) 455-8498 (outside USA)

E: proteintech@ptglab.com
W: ptglab.com

This product is exclusively available under Proteintech Group brand and is not available to purchase from any other manufacturer.

Selected Validation Data



Immunofluorescent analysis of (4% PFA) fixed HeLa cells using Coralite®594 CSPP1 antibody (CL594-11931) at dilution of 1:200.