

For Research Use Only

# CoraLite®594-conjugated RAB3IP/Rabin8 Polyclonal antibody



Catalog Number:CL594-12321

Featured Product

## Basic Information

<b>Catalog Number:</b> CL594-12321	<b>GenBank Accession Number:</b> BC015548	<b>Purification Method:</b> Antigen affinity purification
<b>Size:</b> 100ul , Concentration: 1000 µg/ml by Nanodrop;	<b>GeneID (NCBI):</b> 117177	<b>Recommended Dilutions:</b> IF 1:50-1:500
<b>Source:</b> Rabbit	<b>Full Name:</b> RAB3A interacting protein (rabin3)	<b>Excitation/Emission maxima wavelengths:</b> 593 nm / 614 nm
<b>Isotype:</b> IgG	<b>Calculated MW:</b> 476 aa, 53 kDa	
<b>Immunogen Catalog Number:</b> AG2974	<b>Observed MW:</b> 56 kDa	

## Applications

<b>Tested Applications:</b> IF	<b>Positive Controls:</b> IF : HepG2 cells,
<b>Species Specificity:</b> human, mouse	

## Background Information

RAB3IP, also known as Rabin8, is a deduced 476-amino acid protein containing a central coiled-coil domain, a bipartite nuclear localization signal, and a C-terminal endoplasmic reticulum retention motif. Rabin8 has several sites for N-glycosylation and phosphorylation. Rabin8 plays important roles in various cellular processes, including ciliogenesis. The GEF activity of Rabin8 towards Rab8 is essential for ciliogenesis and cyst apical membrane transport, but not for exocytosis of discoidal/fusiform-shaped vesicles.

## Storage

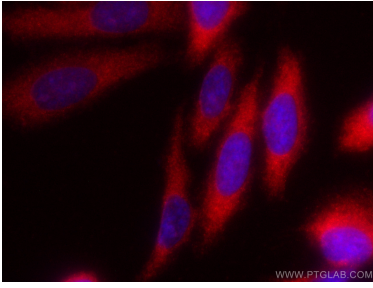
**Storage:**  
Store at -20°C. Avoid exposure to light.  
**Storage Buffer:**  
PBS with 50% Glycerol, 0.05% Proclin300, 0.5% BSA, pH 7.3.  
Aliquoting is unnecessary for -20°C storage

\*\*\* 20ul sizes contain 0.1% BSA

For technical support and original validation data for this product please contact:  
T: 1 (888) 4PTGLAB (1-888-478-4522) (toll free in USA), or 1(312) 455-8498 (outside USA)  
E: proteintech@ptglab.com  
W: ptglab.com

This product is exclusively available under Proteintech Group brand and is not available to purchase from any other manufacturer.

## Selected Validation Data



Immunofluorescent analysis of (-20°C Ethanol) fixed HepG2 cells using CoraLite@594 RAB31P/Rabin8 antibody (CL594-12321) at dilution of 1:200.