

For Research Use Only

CoraLite®594-conjugated SAMHD1 Polyclonal antibody

Catalog Number:CL594-12586

Featured Product



Basic Information

Catalog Number:

CL594-12586

Size:

100ul , Concentration: 1000 ug/ml by Nanodrop;

Source:

Rabbit

Isotype:

IgG

Immunogen Catalog Number:

AG3287

GenBank Accession Number:

BC036450

GeneID (NCBI):

25939

UNIPROT ID:

Q9Y3Z3

Full Name:

SAM domain and HD domain 1

Calculated MW:

626 aa, 72 kDa

Observed MW:

64-72 kDa

Purification Method:

Antigen affinity purification

Recommended Dilutions:

IF/ICC 1:200-1:800

Excitation/Emission maxima wavelengths:

588 nm / 604 nm

Applications

Tested Applications:

IF/ICC

Species Specificity:

human, mouse, rat

Positive Controls:

IF/ICC : HepG2 cells, A549 cells

Background Information

SAMHD1, highly expressed by monocytes and monocyte-derived dendritic cells and by monocyte-derived macrophages at a lower extent, is reported as an HIV-1 restriction factor that inhibits the early step of the HIV-1 life cycle. Vpx (virus-like particles containing viral protein X) could overcome this block by interacting with SAMHD1, inducing proteasome-dependent degradation of SAMHD1. Mutations in SAMHD1 cause Aicardi-Goutières syndrome, a genetic encephalopathy with a presumed immune pathogenesis. Three alternatively spliced transcripts encoding different isoforms have been described.

Storage

Storage:

Store at -20°C. Avoid exposure to light. Stable for one year after shipment.

Storage Buffer:

PBS with 50% Glycerol, 0.05% Proclin300, 0.5% BSA, pH 7.3.

Aliquoting is unnecessary for -20°C storage

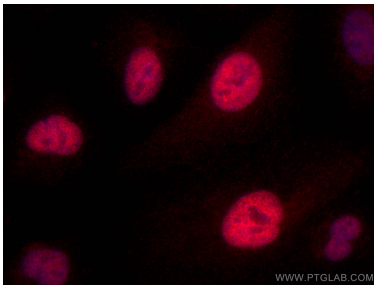
For technical support and original validation data for this product please contact:

T: 1 (888) 4PTGLAB (1-888-478-4522) (toll free in USA), or 1(312) 455-8498 (outside USA)

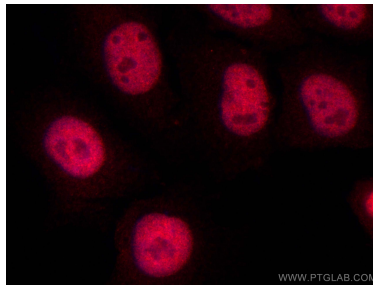
E: proteintech@ptglab.com
W: ptglab.com

This product is exclusively available under Proteintech Group brand and is not available to purchase from any other manufacturer.

Selected Validation Data



Immunofluorescent analysis of (4% PFA) fixed A549 cells using CoraLite®594 SAMHD1 antibody (CL594-12586) at dilution of 1:400.



Immunofluorescent analysis of (4% PFA) fixed HepG2 cells using CoraLite®594 SAMHD1 antibody (CL594-12586) at dilution of 1:400.