

For Research Use Only

CoraLite®594-conjugated Centrin 1 Polyclonal antibody



Catalog Number:CL594-12794

Basic Information

Catalog Number: CL594-12794	GenBank Accession Number: BC029515	Purification Method: Antigen Affinity Purified
Size: 100ul , Concentration: 1000 µg/ml by Nanodrop;	GeneID (NCBI): 1068	Recommended Dilutions: IF 1:50-1:500
Source: Rabbit	Full Name: centrin, EF-hand protein, 1	Excitation/Emission maxima wavelengths: 593 nm / 614 nm
Isotype: IgG	Calculated MW: 172 aa, 20 kDa	
Immunogen Catalog Number: AG3529		

Applications

Tested Applications: IF	Positive Controls: IF : HeLa cells,
Species Specificity: human	

Background Information

EF-hand type Ca²⁺-binding proteins consists of several family members, including Centrin-1, Centrin-2 and Centrin-3. The Centrin proteins are ubiquitously expressed cytoskeletal components that show increased expression during cell differentiation. Centrin-1 plays important roles in the determination of centrosome position and segregation, and in the process of microtubule severing. Centrin-1 is localized to the centrosome of interphase cells, and redistributes to the region of the spindle poles during mitosis, reflecting the dynamic behavior of the centrosome during the cell cycle.

Storage

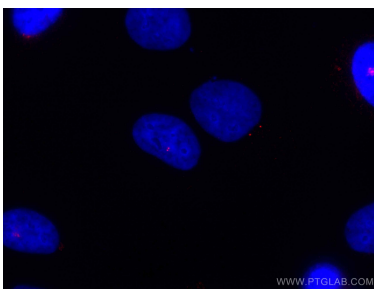
Storage:
Store at -20°C. Avoid exposure to light.
Storage Buffer:
PBS with 50% Glycerol, 0.05% Proclin300, 0.5% BSA, pH 7.3.
Aliquoting is unnecessary for -20°C storage

*** 20ul sizes contain 0.1% BSA

For technical support and original validation data for this product please contact:
T: 1 (888) 4PTGLAB (1-888-478-4522) (toll free in USA), or 1(312) 455-8498 (outside USA)
E: proteintech@ptglab.com
W: ptglab.com

This product is exclusively available under Proteintech Group brand and is not available to purchase from any other manufacturer.

Selected Validation Data



Immunofluorescent analysis of (-20°C Ethanol) fixed HeLa cells using CoraLite®594 Centrin 1 antibody (CL594-12794) at dilution of 1:200.