

For Research Use Only

CoraLite®594-conjugated CUL4B Polyclonal antibody

Catalog Number:CL594-12916

Featured Product



Basic Information

Catalog Number:

CL594-12916

Size:

100ul , Concentration: 1000 ug/ml by Nanodrop;

Source:

Rabbit

Isotype:

IgG

Immunogen Catalog Number:

AG3563

GenBank Accession Number:

BC036216

GeneID (NCBI):

8450

UNIPROT ID:

Q13620

Full Name:

cullin 4B

Calculated MW:

913 aa, 104 kDa

Observed MW:

102 kDa

Purification Method:

Antigen affinity purification

Recommended Dilutions:

IF/ICC 1:50-1:500

Excitation/Emission maxima wavelengths:

588 nm / 604 nm

Applications

Tested Applications:

IF/ICC, FC (Intra)

Species Specificity:

human, mouse

Positive Controls:

IF/ICC : HepG2 cells, HeLa cells

Background Information

Cullin-RING ligases (CRLs) complexes participate in the regulation of diverse cellular processes, including cell cycle progression, transcription, signal transduction and development (PMID: 21816341)(PMID: 21554755). Serving as the scaffold protein, cullins are crucial for the assembly of ligase complexes, which recognize and target various substrates for proteosomal degradation. Two cullin 4 (CUL4) proteins, CUL4A (87 kDa) and CUL4B(104 kDa), are two members in cullin family with 83% of identity. Mutations in human CUL4B are one of the major causes of X-linked mental retardation. Cul4b knockout mice demonstrated that CUL4B is indispensable for embryonic development in the mouse (PMID: 22606329).

Storage

Storage:

Store at -20°C. Avoid exposure to light. Stable for one year after shipment.

Storage Buffer:

PBS with 50% glycerol, 0.05% Proclin300, 0.5% BSA

Aliquoting is unnecessary for -20°C storage

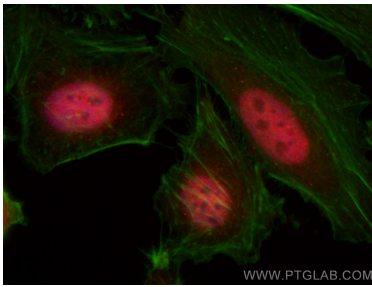
For technical support and original validation data for this product please contact:

T: 1 (888) 4PTGLAB (1-888-478-4522) (toll free in USA), or 1(312) 455-8498 (outside USA)

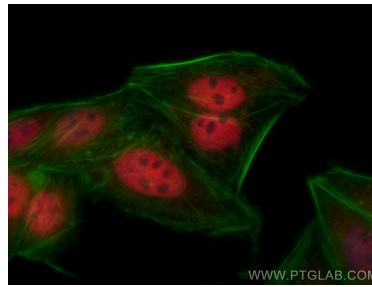
E: proteintech@ptglab.com
W: ptglab.com

This product is exclusively available under Proteintech Group brand and is not available to purchase from any other manufacturer.

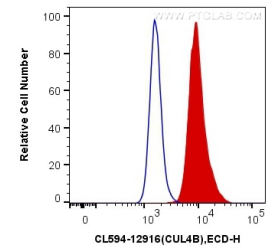
Selected Validation Data



Immunofluorescent analysis of (4% PFA) fixed HeLa cells using CoraLite®594 CUL4B antibody (CL594-12916) at dilution of 1:200, CL488-phalloidin (green).



Immunofluorescent analysis of (4% PFA) fixed HepG2 cells using CoraLite®594 CUL4B antibody (CL594-12916) at dilution of 1:200, CL488-phalloidin (green).



1X10⁶ HeLa cells were intracellularly stained with 0.4 ug CoraLite®594 Anti-Human CUL4B (CL594-12916) (red), or 0.4 ug Control Antibody. Cells were fixed and permeabilized with Transcription Factor Staining Buffer Kit (PF00011).