

For Research Use Only

CoraLite®594-conjugated PARK2/Parkin Polyclonal antibody



Catalog Number:CL594-14060

Featured Product

Basic Information

Catalog Number: CL594-14060	GenBank Accession Number: BC022014	Purification Method: Antigen affinity purification
Size: 100ul , Concentration: 1000 µg/ml by Nanodrop;	GeneID (NCBI): 5071	Recommended Dilutions: IF 1:50-1:500
Source: Rabbit	Full Name: Parkinson disease (autosomal recessive, juvenile) 2, parkin	Excitation/Emission maxima wavelengths: 588 nm / 604 nm
Isotype: IgG	Calculated MW: 52 kDa	
Immunogen Catalog Number: AG5092	Observed MW: 42-52 kDa	

Applications

Tested Applications: IF	Positive Controls: IF : HeLa cells,
Species Specificity: human, mouse, rat	

Background Information

Parkin, a RING-type E3 ubiquitin-protein ligase, is involved in the ubiquitination pathway and contributes to protection from neurotoxicity induced by unfolded protein stresses. Its ubiquitin-protein ligase activity promotes the degradation of a variety of proteins including itself. Mutations in Parkin are implicated in the pathogenesis of autosomal recessive familial Parkinson's disease. It has 8 isoforms produced by alternative splicing.

Storage

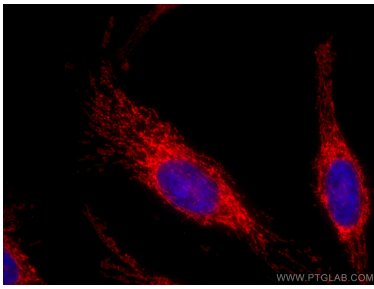
Storage:
Store at -20°C. Avoid exposure to light. Stable for one year after shipment.
Storage Buffer:
PBS with 50% Glycerol, 0.05% Proclin300, 0.5% BSA, pH 7.3.
Aliquoting is unnecessary for -20°C storage

*** 20ul sizes contain 0.1% BSA

For technical support and original validation data for this product please contact:
T: 1 (888) 4PTGLAB (1-888-478-4522) (toll free in USA), or 1(312) 455-8498 (outside USA)
E: proteintech@ptglab.com
W: ptglab.com

This product is exclusively available under Proteintech Group brand and is not available to purchase from any other manufacturer.

Selected Validation Data



Immunofluorescent analysis of (4% PFA) fixed HeLa cells using CoraLite®594 PARK2/Parkin antibody (CL594-14060) at dilution of 1:200.