

For Research Use Only

CoraLite®594-conjugated KRAP/SSFA2 Polyclonal antibody



Catalog Number:CL594-14157

Basic Information

Catalog Number: CL594-14157	GenBank Accession Number: BC028706	Purification Method: Antigen affinity purification
Size: 100ul , Concentration: 1000 µg/ml by Nanodrop;	GeneID (NCBI): 6744	Recommended Dilutions: IF 1:50-1:500
Source: Rabbit	Full Name: sperm specific antigen 2	Excitation/Emission maxima wavelengths: 593 nm / 614 nm
Isotype: IgG	Calculated MW: 138 kDa	
Immunogen Catalog Number: AG5339		

Applications

Tested Applications: IF	Positive Controls: IF : mouse pancreas tissue,
Species Specificity: human, rat, mouse	

Background Information

KRAP (K_i-ras-induced actin-interacting protein), also known as SSFA2, CS1 or SPAG13, is a 1,259 amino acid cytoplasmic protein associated with filamentous-actin (F-actin). KRAP is strongly expressed in pancreas and testis. It is also present in colon cancer cell lines, and the expression is up-regulated by activated K-Ras. KRAP-deficient (KO) mice display decreased adiposity and improved glucose metabolism, implicating KRAP as a potential target for the prevention or treatment of obesity and related diseases. KRAP has also been suggested to be a potential target for cancer. This antibody recognizes endogenous KRAP, which migrates with an apparent molecular mass of 180 kDa in SDS-PAGE. (PMID: 14673706; 21501587; 21873152). This antibody is CL594(Ex/Em 593 nm/614 nm) conjugated.

Storage

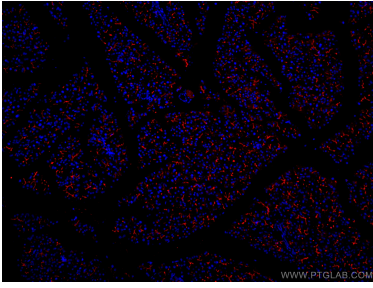
Storage:
Store at -20°C. Avoid exposure to light. Stable for one year after shipment.
Storage Buffer:
PBS with 50% Glycerol, 0.05% Proclin300, 0.5% BSA, pH 7.3.
Aliquoting is unnecessary for -20°C storage

*** 20ul sizes contain 0.1% BSA

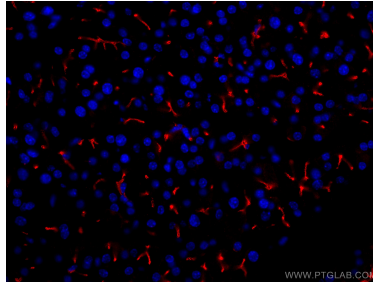
For technical support and original validation data for this product please contact:
T: 1 (888) 4PTGLAB (1-888-478-4522) (toll free in USA), or 1(312) 455-8498 (outside USA)
E: proteintech@ptglab.com
W: ptglab.com

This product is exclusively available under Proteintech Group brand and is not available to purchase from any other manufacturer.

Selected Validation Data



Immunofluorescent analysis of (4% PFA) fixed mouse pancreas tissue using CoraLite®594 KRAP/SSFA2 antibody (CL594-14157) at dilution of 1:200.



Immunofluorescent analysis of (4% PFA) fixed mouse pancreas tissue using CoraLite®594 KRAP/SSFA2 antibody (CL594-14157) at dilution of 1:200.