

For Research Use Only

CoraLite®594-conjugated CEP250/CNAP1 Polyclonal antibody

Catalog Number:CL594-14498



Basic Information

Catalog Number:

CL594-14498

Size:

100ul , Concentration: 1000 ug/ml by
Nanodrop;

Source:

Rabbit

Isotype:

IgG

Immunogen Catalog Number:

AG5925

GenBank Accession Number:

BC001433

GeneID (NCBI):

11190

UNIPROT ID:

Q9BV73

Full Name:

centrosomal protein 250kDa

Calculated MW:

281 kDa

Purification Method:

Antigen affinity purification

Recommended Dilutions:

IF/ICC 1:50-1:500

Excitation/Emission maxima
wavelengths:

588 nm / 604 nm

Applications

Tested Applications:

IF/ICC

Species Specificity:

human

Positive Controls:

IF/ICC : HeLa cells, MCF-7 cells

Background Information

CEP250, also known as C-Nap1, is a 250 kDa coiled-coil protein that localizes to the proximal ends of mother and daughter centrioles. It is required for centriole-centriole cohesion during interphase of the cell cycle. It dissociates from the centrosomes when parental centrioles separate at the beginning of mitosis. The protein associates with and is phosphorylated by NIMA-related kinase 2, which is also associated with the centrosome.

Storage

Storage:

Store at -20°C. Avoid exposure to light. Stable for one year after shipment.

Storage Buffer:

PBS with 50% Glycerol, 0.05% Proclin300, 0.5% BSA, pH 7.3.

Aliquoting is unnecessary for -20°C storage

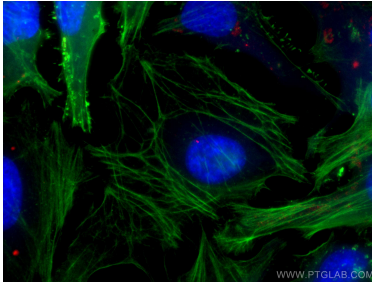
For technical support and original validation data for this product please contact:

T: 1 (888) 4PTGLAB (1-888-478-4522) (toll free
in USA), or 1(312) 455-8498 (outside USA)

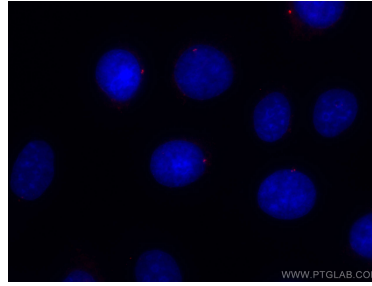
E: proteintech@ptglab.com
W: ptglab.com

This product is exclusively available under Proteintech
Group brand and is not available to purchase from any
other manufacturer.

Selected Validation Data



Immunofluorescent analysis of (-20°C Methanol) fixed HeLa cells using CoraLite®594 CEP250/CNAP1 antibody (CL594-14498) at dilution of 1:100, CoraLite®488 Beta Actin antibody (CL488-66009, Clone: 2D4H5, green).



Immunofluorescent analysis of (-20°C Ethanol) fixed MCF-7 cells using CoraLite®594 CEP250/CNAP1 antibody (CL594-14498) at dilution of 1:100.